

PAR-6 β rabbit pAb

Cat#: orb770640 (Manual)

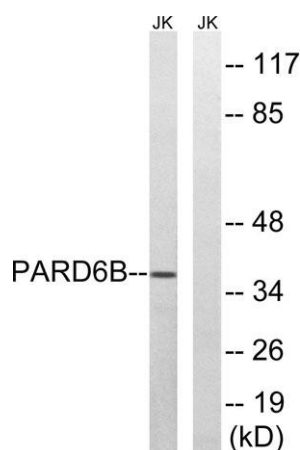
For research use only. Not intended for diagnostic use.

Product Name	PAR-6 β rabbit pAb
Host species	Rabbit
Applications	WB;IHC;IF;ELISA
Species Cross-Reactivity	Human;Mouse
Recommended dilutions	Western Blot: 1/500 - 1/2000. Immunohistochemistry: 1/100 - 1/300. ELISA: 1/5000. Not yet tested in other applications.
Immunogen	The antiserum was produced against synthesized peptide derived from human PARD6B. AA range:233-282
Specificity	PAR-6 β Polyclonal Antibody detects endogenous levels of PAR-6 β protein.
Formulation	Liquid in PBS containing 50% glycerol, 0.5% BSA and 0.02% sodium azide..
Storage	Store at -20°C. Avoid repeated freeze-thaw cycles.
Protein Name	Partitioning defective 6 homolog beta
Gene Name	PARD6B
Cellular localization	Cytoplasm. Cell membrane . Cell junction, tight junction .
Purification	The antibody was affinity-purified from rabbit antiserum by affinity-chromatography using epitope-specific immunogen.
Clonality	Polyclonal

Concentration	1 mg/ml
Observed band	38kD
Human Gene ID	84612
Human Swiss-Prot Number	Q9BYG5
Alternative Names	PARD6B; PAR6B; Partitioning defective 6 homolog beta; PAR-6 beta; PAR-6B

Background

This gene is a member of the PAR6 family and encodes a protein with a PSD95/Discs-large/ZO1 (PDZ) domain, an OPR domain and a semi-Cdc42/Rac interactive binding (CRIB) domain. This cytoplasmic protein is involved in asymmetrical cell division and cell polarization processes as a member of a multi-protein complex. [provided by RefSeq, Jul 2008],



Western blot analysis of lysates from Jurkat cells, using PARD6B Antibody. The lane on the right is blocked with the synthesized peptide.