

## CaSR rabbit pAb

**Cat#: orb770639 (Manual)**

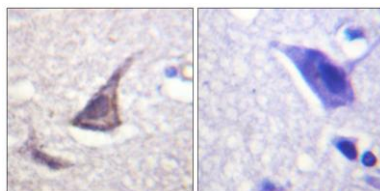
For research use only. Not intended for diagnostic use.

<b>Product Name</b>	CaSR rabbit pAb
<b>Host species</b>	Rabbit
<b>Applications</b>	WB;IHC;IF;ELISA
<b>Species Cross-Reactivity</b>	Human;Mouse;Rat
<b>Recommended dilutions</b>	Western Blot: 1/500 - 1/2000. Immunohistochemistry: 1/100 - 1/300. ELISA: 1/5000. Not yet tested in other applications.
<b>Immunogen</b>	The antiserum was produced against synthesized peptide derived from human Calcium Sensing Receptor. AA range:854-903
<b>Specificity</b>	CaSR Polyclonal Antibody detects endogenous levels of CaSR protein.
<b>Formulation</b>	Liquid in PBS containing 50% glycerol, 0.5% BSA and 0.02% sodium azide..
<b>Storage</b>	Store at -20°C. Avoid repeated freeze-thaw cycles.
<b>Protein Name</b>	Extracellular calcium-sensing receptor
<b>Gene Name</b>	CASR
<b>Cellular localization</b>	Cell membrane ; Multi-pass membrane protein .
<b>Purification</b>	The antibody was affinity-purified from rabbit antiserum by affinity-chromatography using epitope-specific immunogen.
<b>Clonality</b>	Polyclonal

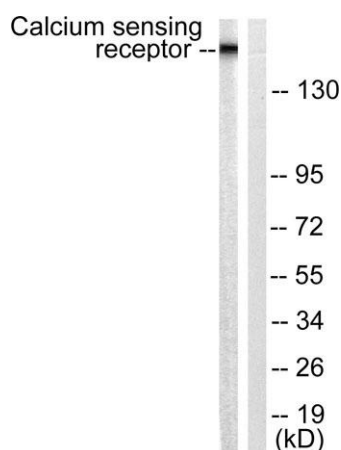
<b>Concentration</b>	1 mg/ml
<b>Observed band</b>	140kD
<b>Human Gene ID</b>	846
<b>Human Swiss-Prot Number</b>	P41180
<b>Alternative Names</b>	CASR; GPRC2A; PCAR1; Extracellular calcium-sensing receptor; CaSR; Parathyroid cell calcium-sensing receptor; PCaR1

### Background

The protein encoded by this gene is a G protein-coupled receptor that is expressed in the parathyroid hormone (PTH)-producing chief cells of the parathyroid gland, and the cells lining the kidney tubule. It senses small changes in circulating calcium concentration and couples this information to intracellular signaling pathways that modify PTH secretion or renal cation handling, thus this protein plays an essential role in maintaining mineral ion homeostasis. Mutations in this gene cause familial hypocalciuric hypercalcemia, familial, isolated hypoparathyroidism, and neonatal severe primary hyperparathyroidism. [provided by RefSeq, Jul 2008],



**Immunohistochemistry analysis of paraffin-embedded human brain tissue, using Calcium Sensing Receptor Antibody. The picture on the right is blocked with the synthesized peptide.**



**Western blot analysis of lysates from LOVO cells, using Calcium Sensing Receptor Antibody. The lane on the right is blocked with the synthesized peptide.**



Explore. Bioreagents.

[www.biorbyt.com](http://www.biorbyt.com)

Biorbyt Ltd  
7 Signet Court, Swann Road, Cambridge, CB5 8LA. United Kingdom  
Email: [info@biorbyt.com](mailto:info@biorbyt.com) | Phone: +44 (0)1223 859-353 | Fax: +44 (0)1223 280-240

Biorbyt LLC  
68 TW Alexander Drive, Durham, NC 27709. United States  
Email: [info@biorbyt.com](mailto:info@biorbyt.com) | Phone: +1 (415) 906-5211 | Fax: +1 (415) 651-8558