

MCH-2R rabbit pAb

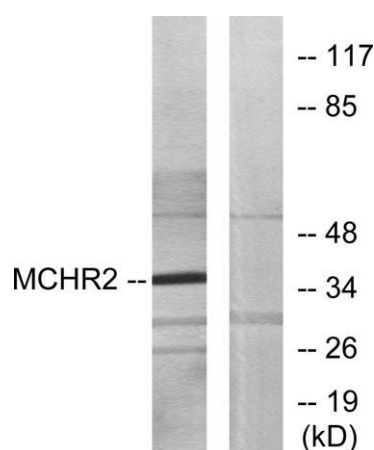
Cat#: orb770635 (Manual)

For research use only. Not intended for diagnostic use.

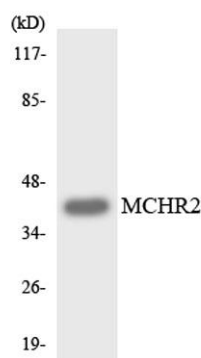
Product Name	MCH-2R rabbit pAb
Host species	Rabbit
Applications	WB;ELISA;IHC
Species Cross-Reactivity	Human;Rat;Mouse;
Recommended dilutions	WB 1:500-2000;IHC-p 1:50-300; ELISA 2000-20000
Immunogen	The antiserum was produced against synthesized peptide derived from human MCHR2. AA range:291-340
Specificity	MCH-2R Polyclonal Antibody detects endogenous levels of MCH-2R protein.
Formulation	Liquid in PBS containing 50% glycerol, 0.5% BSA and 0.02% sodium azide..
Storage	Store at -20°C. Avoid repeated freeze-thaw cycles.
Protein Name	Melanin-concentrating hormone receptor 2
Gene Name	MCHR2
Cellular localization	Cell membrane; Multi-pass membrane protein.
Purification	The antibody was affinity-purified from rabbit antiserum by affinity-chromatography using epitope-specific immunogen.
Clonality	Polyclonal

Concentration	1 mg/ml
Observed band	39kD
Human Gene ID	84539
Human Swiss-Prot Number	Q969V1
Alternative Names	MCHR2; GPR145; SLT; Melanin-concentrating hormone receptor 2; MCH receptor 2; MCH-R2; MCHR-2; G-protein coupled receptor 145; GPRv17; MCH-2R; MCH2; MCH2R

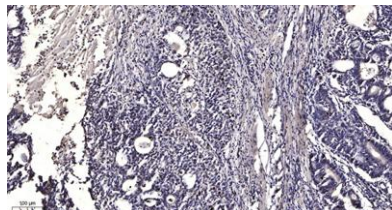
Background function: Receptor for melanin-concentrating hormone, coupled to G proteins that activate phosphoinositide hydrolysis., similarity: Belongs to the G-protein coupled receptor 1 family., tissue specificity: Specifically expressed in the brain, with highest levels in cerebral cortex, hippocampus and amygdala. No expression detected in the cerebellum, thalamus or hypothalamus.,



Western blot analysis of lysates from HUVEC cells, using MCHR2 Antibody. The lane on the right is blocked with the synthesized peptide.



Western blot analysis of the lysates from HeLa cells using MCHR2 antibody.



Immunohistochemical analysis of paraffin-embedded human Gastric adenocarcinoma. 1, Antibody was diluted at 1:200(4° overnight). 2, Tris-EDTA,pH9.0 was used for antigen retrieval. 3,Secondary antibody was diluted at 1:200(room temperature, 45min).