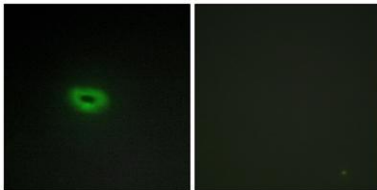


ECRG4 rabbit pAb**Cat#: orb770632 (Manual)**

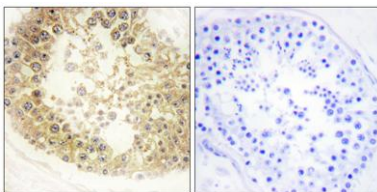
For research use only. Not intended for diagnostic use.

Product Name	ECRG4 rabbit pAb
Host species	Rabbit
Applications	IHC;IF;ELISA
Species Cross-Reactivity	Human;Mouse
Recommended dilutions	Immunohistochemistry: 1/100 - 1/300. Immunofluorescence: 1/200 - 1/1000. ELISA: 1/20000. Not yet tested in other applications.
Immunogen	The antiserum was produced against synthesized peptide derived from human ECRG4. AA range:41-90
Specificity	ECRG4 Polyclonal Antibody detects endogenous levels of ECRG4 protein.
Formulation	Liquid in PBS containing 50% glycerol, 0.5% BSA and 0.02% sodium azide..
Storage	Store at -20°C. Avoid repeated freeze-thaw cycles.
Protein Name	Augurin
Gene Name	C2orf40
Cellular localization	Secreted . Cytoplasm . Apical cell membrane .
Purification	The antibody was affinity-purified from rabbit antiserum by affinity-chromatography using epitope-specific immunogen.
Clonality	Polyclonal

Concentration	1 mg/ml
Observed band	
Human Gene ID	84417
Human Swiss-Prot Number	Q9H1Z8
Alternative Names	C2orf40; ECRG4; Augurin; Esophageal cancer-related gene 4 protein
Background	function:Probable hormone.,similarity:Belongs to the augurin family.,



Immunofluorescence analysis of A549 cells, using ECRG4 Antibody. The picture on the right is blocked with the synthesized peptide.



Immunohistochemistry analysis of paraffin-embedded human testis tissue, using ECRG4 Antibody. The picture on the right is blocked with the synthesized peptide.