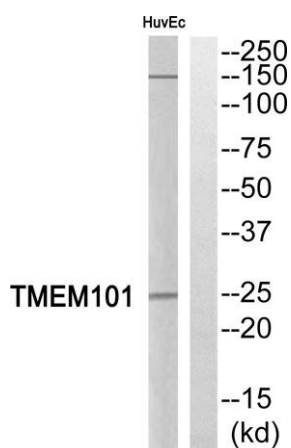


TMEM101 rabbit pAb**Cat#: orb770625 (Manual)**

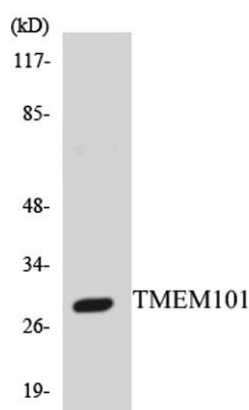
For research use only. Not intended for diagnostic use.

Product Name	TMEM101 rabbit pAb
Host species	Rabbit
Applications	WB;ELISA
Species Cross-Reactivity	Human;Mouse
Recommended dilutions	Western Blot: 1/500 - 1/2000. ELISA: 1/10000. Not yet tested in other applications.
Immunogen	The antiserum was produced against synthesized peptide derived from human TMEM101. AA range:101-150
Specificity	TMEM101 Polyclonal Antibody detects endogenous levels of TMEM101 protein.
Formulation	Liquid in PBS containing 50% glycerol, 0.5% BSA and 0.02% sodium azide..
Storage	Store at -20°C. Avoid repeated freeze-thaw cycles.
Protein Name	Transmembrane protein 101
Gene Name	TMEM101
Cellular localization	Membrane ; Multi-pass membrane protein .
Purification	The antibody was affinity-purified from rabbit antiserum by affinity-chromatography using epitope-specific immunogen.
Clonality	Polyclonal

Concentration	1 mg/ml
Observed band	28kD
Human Gene ID	84336
Human Swiss-Prot Number	Q96IK0
Alternative Names	TMEM101; Transmembrane protein 101; Putative NF-kappa-B-activating protein 130
Background	function:May activate NF-kappa-B signaling pathways.,



Western blot analysis of TMEM101 Antibody. The lane on the right is blocked with the TMEM101 peptide.



Western blot analysis of the lysates from HepG2 cells using TMEM101 antibody.