

## ACAD-11 rabbit pAb

**Cat#: orb770610 (Manual)**

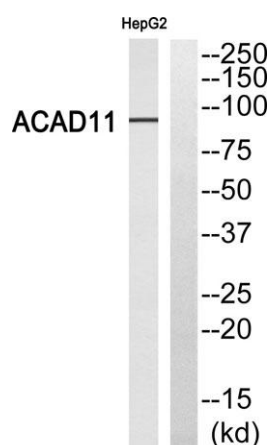
For research use only. Not intended for diagnostic use.

<b>Product Name</b>	ACAD-11 rabbit pAb
<b>Host species</b>	Rabbit
<b>Applications</b>	WB;IHC;IF;ELISA
<b>Species Cross-Reactivity</b>	Human;Rat;Mouse;
<b>Recommended dilutions</b>	Western Blot: 1/500 - 1/2000. Immunohistochemistry: 1/100 - 1/300. ELISA: 1/20000. Not yet tested in other applications.
<b>Immunogen</b>	The antiserum was produced against synthesized peptide derived from human ACAD11. AA range:381-430
<b>Specificity</b>	ACAD-11 Polyclonal Antibody detects endogenous levels of ACAD-11 protein.
<b>Formulation</b>	Liquid in PBS containing 50% glycerol, 0.5% BSA and 0.02% sodium azide..
<b>Storage</b>	Store at -20°C. Avoid repeated freeze-thaw cycles.
<b>Protein Name</b>	Acyl-CoA dehydrogenase family member 11
<b>Gene Name</b>	ACAD11
<b>Cellular localization</b>	Peroxisome . Mitochondrion membrane . Has been detected associated with mitochondrial membrane, but no matrix, in kidney and cerebellum, as well as in a neuroblastoma cell line, but not in skin fibroblasts, where it is observed in cytoplasmic vesicles (Pu
<b>Purification</b>	The antibody was affinity-purified from rabbit antiserum by affinity-chromatography using epitope-specific immunogen.

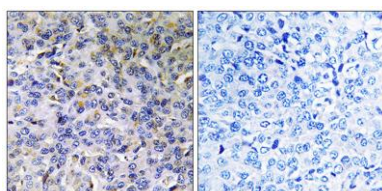
<b>Clonality</b>	Polyclonal
<b>Concentration</b>	1 mg/ml
<b>Observed band</b>	87kD
<b>Human Gene ID</b>	84129
<b>Human Swiss-Prot Number</b>	Q709F0
<b>Alternative Names</b>	ACAD11; Acyl-CoA dehydrogenase family member 11; ACAD-11

### Background

acyl-CoA dehydrogenase family member 11(ACAD11) Homo sapiens  
This gene encodes an acyl-CoA dehydrogenase enzyme with a preference for carbon chain lengths between 20 and 26. Naturally occurring read-through transcription occurs between the upstream gene NPHP3 (nephronophthisis 3 (adolescent)) and this gene. [provided by RefSeq, Aug 2015],



**Western blot analysis of ACAD11 Antibody. The lane on the right is blocked with the ACAD11 peptide.**



**Immunohistochemistry analysis of paraffin-embedded human breast carcinoma, using ACAD11 Antibody. The lane on the right is blocked with the ACAD11 peptide.**



Explore. Bioreagents.

[www.biorbyt.com](http://www.biorbyt.com)