

ULK1 rabbit pAb

Cat#: orb770601 (Manual)

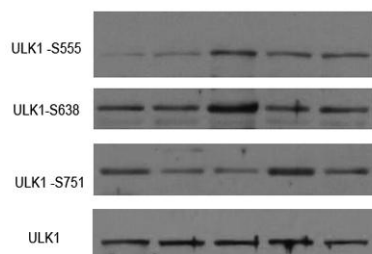
For research use only. Not intended for diagnostic use.

Product Name	ULK1 rabbit pAb
Host species	Rabbit
Applications	IHC;IF;WB;ELISA
Species Cross-Reactivity	Human;Mouse
Recommended dilutions	WB 1:500-2000,Immunohistochemistry: 1/100 - 1/300. ELISA: 1/40000. Not yet tested in other applications.
Immunogen	Synthesized peptide derived from the C-terminal region of human ULK1.
Specificity	ULK1 Polyclonal Antibody detects endogenous levels of ULK1 protein.
Formulation	Liquid in PBS containing 50% glycerol, 0.5% BSA and 0.02% sodium azide..
Storage	Store at -20°C. Avoid repeated freeze-thaw cycles.
Protein Name	Serine/threonine-protein kinase ULK1
Gene Name	ULK1
Cellular localization	Cytoplasm, cytosol . Preautophagosomal structure . Under starvation conditions, is localized to punctate structures primarily representing the isolation membrane that sequesters a portion of the cytoplasm resulting in the formation of an autophagosome. .
Purification	The antibody was affinity-purified from rabbit antiserum by affinity-chromatography using epitope-specific immunogen.

Clonality	Polyclonal
Concentration	1 mg/ml
Observed band	
Human Gene ID	8408
Human Swiss-Prot Number	O75385
Alternative Names	ULK1; KIAA0722; Serine/threonine-protein kinase ULK1; Autophagy-related protein 1 homolog; ATG1; hATG1; Unc-51-like kinase 1

Background

catalytic activity:ATP + a protein = ADP + a phosphoprotein.,function:Involved in axon growth. Plays an essential role in neurite extension of cerebellar granule cells.,similarity:Belongs to the protein kinase superfamily. Ser/Thr protein kinase family. APG1/unc-51/ULK1 subfamily.,similarity:Contains 1 protein kinase domain.,subunit:Interacts with GABARAP and GABARAPL2.,tissue specificity:Ubiquitously expressed. Detected in the following adult tissues: skeletal muscle, heart, pancreas, brain, placenta, liver, kidney, and lung.,



Western Blot analysis of various cell lysis(provided by our customer). Primary Antibody was diluted at 1:1000. Secondary antibody(catalog#:RS23920 was diluted at 1:10000



Immunohistochemical analysis of paraffin-embedded human tonsil. 1, Antibody was diluted at 1:200(4° overnight). 2, Tris-EDTA,pH9.0 was used for antigen retrieval. 3,Secondary antibody was diluted at 1:200(room temperature, 30min).