

Synaptotagmin XVI rabbit pAb

Cat#: orb770588 (Manual)

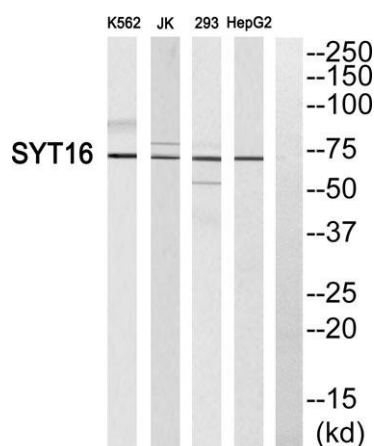
For research use only. Not intended for diagnostic use.

Product Name	Synaptotagmin XVI rabbit pAb
Host species	Rabbit
Applications	WB;ELISA
Species Cross-Reactivity	Human;Rat;Mouse;
Recommended dilutions	Western Blot: 1/500 - 1/2000. ELISA: 1/40000. Not yet tested in other applications.
Immunogen	The antiserum was produced against synthesized peptide derived from human SYT16. AA range:231-280
Specificity	Synaptotagmin XVI Polyclonal Antibody detects endogenous levels of Synaptotagmin XVI protein.
Formulation	Liquid in PBS containing 50% glycerol, 0.5% BSA and 0.02% sodium azide..
Storage	Store at -20°C. Avoid repeated freeze-thaw cycles.
Protein Name	Synaptotagmin-16
Gene Name	SYT16
Cellular localization	plasma membrane,
Purification	The antibody was affinity-purified from rabbit antiserum by affinity-chromatography using epitope-specific immunogen.
Clonality	Polyclonal

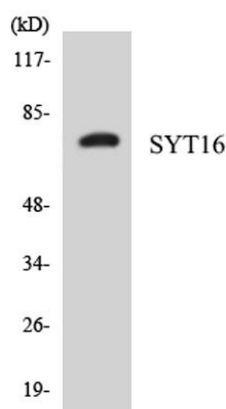
Concentration	1 mg/ml
Observed band	72kD
Human Gene ID	83851
Human Swiss-Prot Number	Q17RD7
Alternative Names	SYT16; STREP14; SYT14L; SYT14R; Synaptotagmin-16; Chr14Syt; Synaptotagmin 14-like protein; Synaptotagmin XIV-related protein

Background

function: May be involved in the trafficking and exocytosis of secretory vesicles in non-neuronal tissues. Is Ca(2+)-independent., sequence caution: Translated as Gln., similarity: Belongs to the synaptotagmin family., similarity: Contains 2 C2 domains., subunit: Homodimer. Can also form heterodimers., tissue specificity: Expressed in brain.,



Western blot analysis of SYT16 Antibody. The lane on the right is blocked with the SYT16 peptide.



Western blot analysis of the lysates from HepG2 cells using SYT16 antibody.