

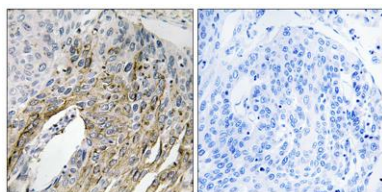
## LONP2 rabbit pAb

**Cat#: orb770583 (Manual)**

For research use only. Not intended for diagnostic use.

<b>Product Name</b>	LONP2 rabbit pAb
<b>Host species</b>	Rabbit
<b>Applications</b>	WB;IHC;IF;ELISA
<b>Species Cross-Reactivity</b>	Human;Mouse;Rat
<b>Recommended dilutions</b>	Western Blot: 1/500 - 1/2000. Immunohistochemistry: 1/100 - 1/300. ELISA: 1/40000. Not yet tested in other applications.
<b>Immunogen</b>	The antiserum was produced against synthesized peptide derived from human LONP2. AA range:780-829
<b>Specificity</b>	LONP2 Polyclonal Antibody detects endogenous levels of LONP2 protein.
<b>Formulation</b>	Liquid in PBS containing 50% glycerol, 0.5% BSA and 0.02% sodium azide..
<b>Storage</b>	Store at -20°C. Avoid repeated freeze-thaw cycles.
<b>Protein Name</b>	Lon protease homolog 2 peroxisomal
<b>Gene Name</b>	LONP2
<b>Cellular localization</b>	Peroxisome matrix .
<b>Purification</b>	The antibody was affinity-purified from rabbit antiserum by affinity-chromatography using epitope-specific immunogen.
<b>Clonality</b>	Polyclonal

<b>Concentration</b>	1 mg/ml
<b>Observed band</b>	95kD
<b>Human Gene ID</b>	83752
<b>Human Swiss-Prot Number</b>	Q86WA8
<b>Alternative Names</b>	LONP2; LONP; Lon protease homolog 2; peroxisomal; Lon protease-like protein 2; Lon protease 2; Peroxisomal Lon protease
<b>Background</b>	function:Probable serine protease which may be involved in peroxisome biogenesis.,similarity:Belongs to the peptidase S16 family.,



**Immunohistochemistry analysis of paraffin-embedded human lung carcinoma tissue, using LONP2 Antibody. The picture on the right is blocked with the synthesized peptide.**