

BCL2L12 rabbit pAb**Cat#: orb770572 (Manual)**

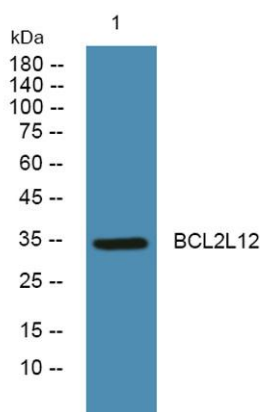
For research use only. Not intended for diagnostic use.

Product Name	BCL2L12 rabbit pAb
Host species	Rabbit
Applications	WB;ELISA
Species Cross-Reactivity	Human;Mouse
Recommended dilutions	Western Blot: 1/500 - 1/2000. ELISA: 1/5000. Not yet tested in other applications.
Immunogen	Synthesized peptide derived from BCL2L12 . at AA range: 60-140
Specificity	BCL2L12 Polyclonal Antibody detects endogenous levels of BCL2L12 protein.
Formulation	Liquid in PBS containing 50% glycerol, 0.5% BSA and 0.02% sodium azide..
Storage	Store at -20°C. Avoid repeated freeze-thaw cycles.
Protein Name	Bcl-2-like protein 12
Gene Name	BCL2L12
Cellular localization	nucleus,membrane,
Purification	The antibody was affinity-purified from rabbit antiserum by affinity-chromatography using epitope-specific immunogen.
Clonality	Polyclonal

Concentration	1 mg/ml
Observed band	34kD
Human Gene ID	83596
Human Swiss-Prot Number	Q9HB09
Alternative Names	BCL2L12; BPR; Bcl-2-like protein 12; Bcl2-L-12; Bcl-2-related proline-rich protein

Background

This gene encodes a member of a family of proteins containing a Bcl-2 homology domain 2 (BH2). The encoded protein is an anti-apoptotic factor that acts as an inhibitor of caspases 3 and 7 in the cytoplasm. In the nucleus, it binds to the p53 tumor suppressor protein, preventing its association with target genes. Overexpression of this gene has been detected in a number of different cancers. There is a pseudogene for this gene on chromosome 3. Alternative splicing results in multiple transcript variants. [provided by RefSeq, Sep 2013],



Western blot analysis of lysates from Jarkat cells, primary antibody was diluted at 1:1000, 4° over night