

## Frizzled-4 rabbit pAb

**Cat#: orb770540 (Manual)**

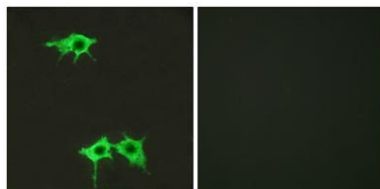
For research use only. Not intended for diagnostic use.

<b>Product Name</b>	Frizzled-4 rabbit pAb
<b>Host species</b>	Rabbit
<b>Applications</b>	IF;ELISA
<b>Species Cross-Reactivity</b>	Human;Mouse;Rat
<b>Recommended dilutions</b>	Immunofluorescence: 1/200 - 1/1000. ELISA: 1/5000. Not yet tested in other applications.
<b>Immunogen</b>	The antiserum was produced against synthesized peptide derived from human FZD4. AA range:131-180
<b>Specificity</b>	Frizzled-4 Polyclonal Antibody detects endogenous levels of Frizzled-4 protein.
<b>Formulation</b>	Liquid in PBS containing 50% glycerol, 0.5% BSA and 0.02% sodium azide..
<b>Storage</b>	Store at -20°C. Avoid repeated freeze-thaw cycles.
<b>Protein Name</b>	Frizzled-4
<b>Gene Name</b>	FZD4
<b>Cellular localization</b>	Cell membrane ; Multi-pass membrane protein .
<b>Purification</b>	The antibody was affinity-purified from rabbit antiserum by affinity-chromatography using epitope-specific immunogen.
<b>Clonality</b>	Polyclonal

<b>Concentration</b>	1 mg/ml
<b>Observed band</b>	
<b>Human Gene ID</b>	8322
<b>Human Swiss-Prot Number</b>	Q9ULV1
<b>Alternative Names</b>	FZD4; Frizzled-4; Fz-4; hFz4; FzE4; CD antigen CD344

**Background**

frizzled class receptor 4(FZD4) Homo sapiens This gene is a member of the frizzled gene family. Members of this family encode seven-transmembrane domain proteins that are receptors for the Wingless type MMTV integration site family of signaling proteins. Most frizzled receptors are coupled to the beta-catenin canonical signaling pathway. This protein may play a role as a positive regulator of the Wingless type MMTV integration site signaling pathway. A transcript variant retaining intronic sequence and encoding a shorter isoform has been described, however, its expression is not supported by other experimental evidence. [provided by RefSeq, Jul 2008],



**Immunofluorescence analysis of LOVO cells, using FZD4 Antibody. The picture on the right is blocked with the synthesized peptide.**