

Rab 1B rabbit pAb

Cat#: orb770528 (Manual)

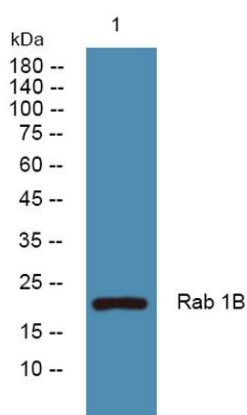
For research use only. Not intended for diagnostic use.

Product Name	Rab 1B rabbit pAb
Host species	Rabbit
Applications	WB;ELISA;IHC
Species Cross-Reactivity	Human;Mouse;Rat
Recommended dilutions	WB 1:500-2000;IHC-p 1:50-300; ELISA 2000-20000
Immunogen	Synthesized peptide derived from Rab 1B . at AA range: 50-130
Specificity	Rab 1B Polyclonal Antibody detects endogenous levels of Rab 1B protein.
Formulation	Liquid in PBS containing 50% glycerol, 0.5% BSA and 0.02% sodium azide..
Storage	Store at -20°C. Avoid repeated freeze-thaw cycles.
Protein Name	Ras-related protein Rab-1B
Gene Name	RAB1B
Cellular localization	Cytoplasm . Membrane ; Lipid-anchor ; Cytoplasmic side . Preautophagosomal structure membrane ; Lipid-anchor ; Cytoplasmic side . Cytoplasm, perinuclear region . Targeted by REP1 to membranes of specific subcellular compartments including endoplasmic reti
Purification	The antibody was affinity-purified from rabbit antiserum by affinity-chromatography using epitope-specific immunogen.

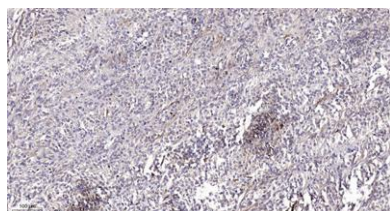
Clonality	Polyclonal
Concentration	1 mg/ml
Observed band	22kD
Human Gene ID	81876
Human Swiss-Prot Number	Q9H0U4
Alternative Names	RAB1B; Ras-related protein Rab-1B

Background

Members of the RAB protein family, such as RAB1B, are low molecular mass monomeric GTPases localized on the cytoplasmic surfaces of distinct membrane-bound organelles. RAB1B functions in the early secretory pathway and is essential for vesicle transport between the endoplasmic reticulum (ER) and Golgi (Chen et al., 1997 [PubMed 9030196]; Alvarez et al., 2003 [PubMed 12802079]).[supplied by OMIM, Jan 2009],



Western blot analysis of lysates from SH-SY5Y cells, primary antibody was diluted at 1:1000, 4° over night



Immunohistochemical analysis of paraffin-embedded human Colon cancer. 1, Antibody was diluted at 1:200(4° overnight). 2, Tris-EDTA,pH9.0 was used for antigen retrieval. 3,Secondary antibody was diluted at 1:200(room temperature, 45min).



Explore. Bioreagents.

www.biorbyt.com