

**ApoL3 rabbit pAb****Cat#: orb770502 (Manual)**

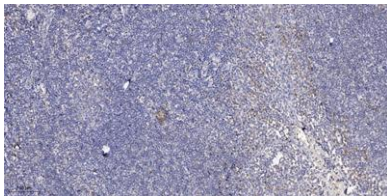
For research use only. Not intended for diagnostic use.

|                                 |   |
|---------------------------------|---|
| <b>Product Name</b>             | ApoL3 rabbit pAb  |
| <b>Host species</b>             | Rabbit  |
| <b>Applications</b>             | IHC;IF;ELISA  |
| <b>Species Cross-Reactivity</b> | Human;Rat;Mouse;  |
| <b>Recommended dilutions</b>    | Immunohistochemistry: 1/100 - 1/300. ELISA: 1/40000. Not yet tested in other applications.                            |
| <b>Immunogen</b>                | Synthesized peptide derived from ApoL3 . at AA range: 100-180   |
| <b>Specificity</b>              | ApoL3 Polyclonal Antibody detects endogenous levels of ApoL3 protein.   |
| <b>Formulation</b>              | Liquid in PBS containing 50% glycerol, 0.5% BSA and 0.02% sodium azide..  |
| <b>Storage</b>                  | Store at -20°C. Avoid repeated freeze-thaw cycles.  |
| <b>Protein Name</b>             | Apolipoprotein L3   |
| <b>Gene Name</b>                | APOL3   |
| <b>Cellular localization</b>    | Cytoplasm .   |
| <b>Purification</b>             | The antibody was affinity-purified from rabbit antiserum by affinity-chromatography using epitope-specific immunogen. |
| <b>Clonality</b>                | Polyclonal  |

|                                |  |
|--------------------------------|--|
| <b>Concentration</b>           | 1 mg/ml  |
| <b>Observed band</b>           |  |
| <b>Human Gene ID</b>           | 80833  |
| <b>Human Swiss-Prot Number</b> | O95236   |
| <b>Alternative Names</b>       | APOL3; Apolipoprotein L3; Apolipoprotein L-III; ApoL-III; TNF-inducible protein CG12-1; CG12_1 |

**Background**

This gene is a member of the apolipoprotein L gene family, and it is present in a cluster with other family members on chromosome 22. The encoded protein is found in the cytoplasm, where it may affect the movement of lipids, including cholesterol, and/or allow the binding of lipids to organelles. In addition, expression of this gene is up-regulated by tumor necrosis factor- $\alpha$  in endothelial cells lining the normal and atherosclerotic iliac artery and aorta. Alternative splicing results in multiple transcript variants. [provided by RefSeq, Mar 2015],



**Immunohistochemical analysis of paraffin-embedded human tonsil. 1, Antibody was diluted at 1:200(4° overnight). 2, Tris-EDTA,pH9.0 was used for antigen retrieval. 3,Secondary antibody was diluted at 1:200(room temperature, 30min).**