

**ApoL4 rabbit pAb****Cat#: orb770501 (Manual)**

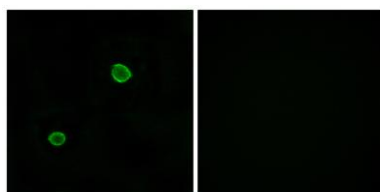
For research use only. Not intended for diagnostic use.

<b>Product Name</b>	ApoL4 rabbit pAb
<b>Host species</b>	Rabbit
<b>Applications</b>	WB;IHC;IF;ELISA
<b>Species Cross-Reactivity</b>	Human;Rat;Mouse;
<b>Recommended dilutions</b>	Western Blot: 1/500 - 1/2000. Immunohistochemistry: 1/100 - 1/300. Immunofluorescence: 1/200 - 1/1000. ELISA: 1/20000. Not yet tested in other applications.
<b>Immunogen</b>	The antiserum was produced against synthesized peptide derived from human APOL4. AA range:301-350
<b>Specificity</b>	ApoL4 Polyclonal Antibody detects endogenous levels of ApoL4 protein.
<b>Formulation</b>	Liquid in PBS containing 50% glycerol, 0.5% BSA and 0.02% sodium azide..
<b>Storage</b>	Store at -20°C. Avoid repeated freeze-thaw cycles.
<b>Protein Name</b>	Apolipoprotein L4
<b>Gene Name</b>	APOL4
<b>Cellular localization</b>	Secreted .
<b>Purification</b>	The antibody was affinity-purified from rabbit antiserum by affinity-chromatography using epitope-specific immunogen.
<b>Clonality</b>	Polyclonal

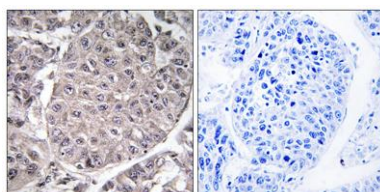
<b>Concentration</b>	1 mg/ml
<b>Observed band</b>	34kD
<b>Human Gene ID</b>	80832
<b>Human Swiss-Prot Number</b>	Q9BPW4
<b>Alternative Names</b>	APOL4; Apolipoprotein L4; Apolipoprotein L-IV; ApoL-IV

## Background

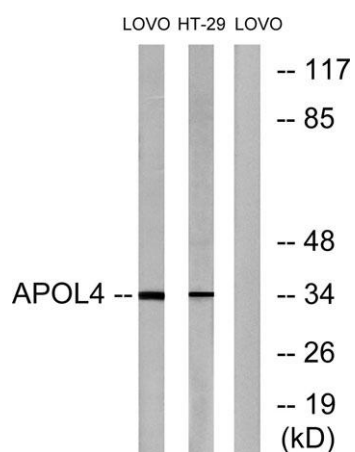
The protein encoded by this gene is a member of the apolipoprotein L family and may play a role in lipid exchange and transport throughout the body, as well as in reverse cholesterol transport from peripheral cells to the liver. Two transcript variants encoding two different isoforms have been found for this gene. Only one of the isoforms appears to be a secreted protein. [provided by RefSeq, Jul 2008],



**Immunofluorescence analysis of MCF7 cells, using APOL4 Antibody. The picture on the right is blocked with the synthesized peptide.**



**Immunohistochemistry analysis of paraffin-embedded human liver carcinoma tissue, using APOL4 Antibody. The picture on the right is blocked with the synthesized peptide.**



Western blot analysis of lysates from LOVO and HT-29 cells, using APOL4 Antibody. The lane on the right is blocked with the synthesized peptide.