

ApoL5 rabbit pAb

Cat#: orb770500 (Manual)

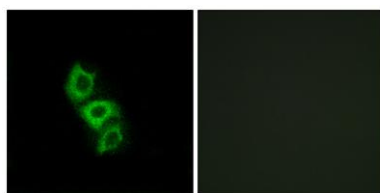
For research use only. Not intended for diagnostic use.

Product Name	ApoL5 rabbit pAb
Host species	Rabbit
Applications	IHC;IF;ELISA
Species Cross-Reactivity	Human;Rat;Mouse;
Recommended dilutions	Immunohistochemistry: 1/100 - 1/300. Immunofluorescence: 1/200 - 1/1000. ELISA: 1/40000. Not yet tested in other applications.
Immunogen	The antiserum was produced against synthesized peptide derived from human APOL5. AA range:384-433
Specificity	ApoL5 Polyclonal Antibody detects endogenous levels of ApoL5 protein.
Formulation	Liquid in PBS containing 50% glycerol, 0.5% BSA and 0.02% sodium azide..
Storage	Store at -20°C. Avoid repeated freeze-thaw cycles.
Protein Name	Apolipoprotein L5
Gene Name	APOL5
Cellular localization	Cytoplasm .
Purification	The antibody was affinity-purified from rabbit antiserum by affinity-chromatography using epitope-specific immunogen.
Clonality	Polyclonal

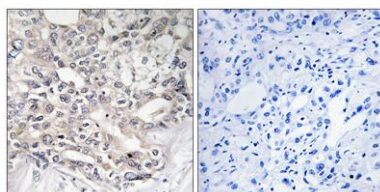
Concentration	1 mg/ml
Observed band	
Human Gene ID	80831
Human Swiss-Prot Number	Q9BWW9
Alternative Names	APOL5; Apolipoprotein L5; Apolipoprotein L-V; ApoL-V

Background

This gene is a member of the apolipoprotein L gene family. The encoded protein is found in the cytoplasm, where it may affect the movement of lipids or allow the binding of lipids to organelles. [provided by RefSeq, Jul 2008],



Immunofluorescence analysis of A549 cells, using APOL5 Antibody. The picture on the right is blocked with the synthesized peptide.



Immunohistochemistry analysis of paraffin-embedded human liver carcinoma tissue, using APOL5 Antibody. The picture on the right is blocked with the synthesized peptide.