

**Ndfip1 rabbit pAb****Cat#: orb770496 (Manual)**

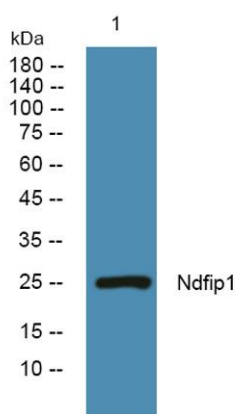
For research use only. Not intended for diagnostic use.

<b>Product Name</b>	Ndfip1 rabbit pAb
<b>Host species</b>	Rabbit
<b>Applications</b>	WB;ELISA
<b>Species Cross-Reactivity</b>	Human;Mouse;Rat
<b>Recommended dilutions</b>	Western Blot: 1/500 - 1/2000. ELISA: 1/40000. Not yet tested in other applications.
<b>Immunogen</b>	Synthesized peptide derived from Ndfip1 . at AA range: 150-230
<b>Specificity</b>	Ndfip1 Polyclonal Antibody detects endogenous levels of Ndfip1 protein.
<b>Formulation</b>	Liquid in PBS containing 50% glycerol, 0.5% BSA and 0.02% sodium azide..
<b>Storage</b>	Store at -20°C. Avoid repeated freeze-thaw cycles.
<b>Protein Name</b>	NEDD4 family-interacting protein 1
<b>Gene Name</b>	NDFIP1
<b>Cellular localization</b>	Endosome membrane ; Multi-pass membrane protein . Golgi apparatus membrane . Cell junction, synapse, synaptosome . Cell projection, dendrite . Secreted . Detected in exosomes and secreted via the exosomal pathway (PubMed:18819914).
<b>Purification</b>	The antibody was affinity-purified from rabbit antiserum by affinity-chromatography using epitope-specific immunogen.

<b>Clonality</b>	Polyclonal
<b>Concentration</b>	1 mg/ml
<b>Observed band</b>	25kD
<b>Human Gene ID</b>	80762
<b>Human Swiss-Prot Number</b>	Q9BT67
<b>Alternative Names</b>	NDFIP1; N4WBP5; PSEC0192; PSEC0223; NEDD4 family-interacting protein 1; Breast cancer-associated protein SGA-1M; NEDD4 WW domain-binding protein 5; Putative MAPK-activating protein PM13; Putative NF-kappa-B-activating protein 164; Putative

### Background

The protein encoded by this gene belongs to a small group of evolutionarily conserved proteins with three transmembrane domains. It is a potential target for ubiquitination by the Nedd4 family of proteins. This protein is thought to be part of a family of integral Golgi membrane proteins. [provided by RefSeq, Jul 2008],



**Western blot analysis of lysates from Jarkat cells, primary antibody was diluted at 1:1000, 4° over night**