

**NOR-1 rabbit pAb****Cat#: orb770487 (Manual)**

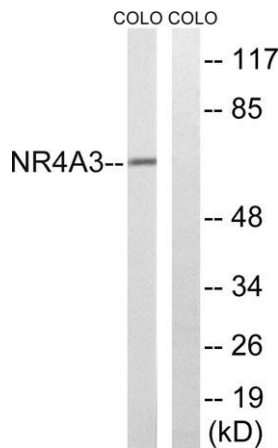
For research use only. Not intended for diagnostic use.

<b>Product Name</b>	NOR-1 rabbit pAb
<b>Host species</b>	Rabbit
<b>Applications</b>	WB;ELISA
<b>Species Cross-Reactivity</b>	Human;Mouse;Rat
<b>Recommended dilutions</b>	Western Blot: 1/500 - 1/2000. ELISA: 1/40000. Not yet tested in other applications.
<b>Immunogen</b>	The antiserum was produced against synthesized peptide derived from human NR4A3. AA range:387-436
<b>Specificity</b>	NOR-1 Polyclonal Antibody detects endogenous levels of NOR-1 protein.
<b>Formulation</b>	Liquid in PBS containing 50% glycerol, 0.5% BSA and 0.02% sodium azide..
<b>Storage</b>	Store at -20°C. Avoid repeated freeze-thaw cycles.
<b>Protein Name</b>	Nuclear receptor subfamily 4 group A member 3
<b>Gene Name</b>	NR4A3
<b>Cellular localization</b>	Nucleus .
<b>Purification</b>	The antibody was affinity-purified from rabbit antiserum by affinity-chromatography using epitope-specific immunogen.
<b>Clonality</b>	Polyclonal

<b>Concentration</b>	1 mg/ml
<b>Observed band</b>	65kD
<b>Human Gene ID</b>	8013
<b>Human Swiss-Prot Number</b>	Q92570
<b>Alternative Names</b>	NR4A3; CHN; CSMF; MINOR; NOR1; TEC; Nuclear receptor subfamily 4 group A member 3; Mitogen-induced nuclear orphan receptor; Neuron-derived orphan receptor 1; Nuclear hormone receptor NOR-1

## Background

This gene encodes a member of the steroid-thyroid hormone-retinoid receptor superfamily. The encoded protein may act as a transcriptional activator. The protein can efficiently bind the NGFI-B Response Element (NBRE). Three different versions of extraskeletal myxoid chondrosarcomas (EMCs) are the result of reciprocal translocations between this gene and other genes. The translocation breakpoints are associated with Nuclear Receptor Subfamily 4, Group A, Member 3 (on chromosome 9) and either Ewing Sarcoma Breakpoint Region 1 (on chromosome 22), RNA Polymerase II, TATA Box-Binding Protein-Associated Factor, 68-KD (on chromosome 17), or Transcription factor 12 (on chromosome 15). Multiple transcript variants encoding different isoforms have been found for this gene. [provided by RefSeq, Mar 2010],



Western blot analysis of lysates from COLO cells, using NR4A3 Antibody. The lane on the right is blocked with the synthesized peptide.