

**BAIAP2L2 rabbit pAb****Cat#: orb770486 (Manual)**

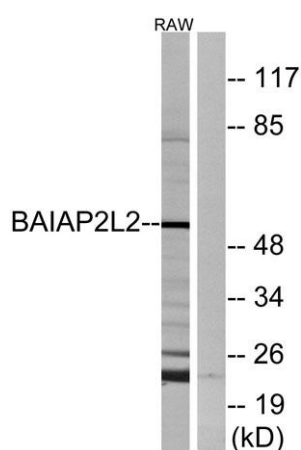
For research use only. Not intended for diagnostic use.

<b>Product Name</b>	BAIAP2L2 rabbit pAb
<b>Host species</b>	Rabbit
<b>Applications</b>	WB;IHC;IF;ELISA
<b>Species Cross-Reactivity</b>	Human;Mouse
<b>Recommended dilutions</b>	Western Blot: 1/500 - 1/2000. Immunohistochemistry: 1/100 - 1/300. ELISA: 1/40000. Not yet tested in other applications.
<b>Immunogen</b>	The antiserum was produced against synthesized peptide derived from human BAIAP2L2. AA range:111-160
<b>Specificity</b>	BAIAP2L2 Polyclonal Antibody detects endogenous levels of BAIAP2L2 protein.
<b>Formulation</b>	Liquid in PBS containing 50% glycerol, 0.5% BSA and 0.02% sodium azide..
<b>Storage</b>	Store at -20°C. Avoid repeated freeze-thaw cycles.
<b>Protein Name</b>	Brain-specific angiogenesis inhibitor 1-associated protein 2-like protein 2
<b>Gene Name</b>	BAIAP2L2
<b>Cellular localization</b>	Cell membrane ; Peripheral membrane protein . Cell junction . Cytoplasmic vesicle membrane . Localizes to RAB13-positive vesicles and to the plasma membrane at intercellular contacts.
<b>Purification</b>	The antibody was affinity-purified from rabbit antiserum by affinity-chromatography using epitope-specific immunogen.

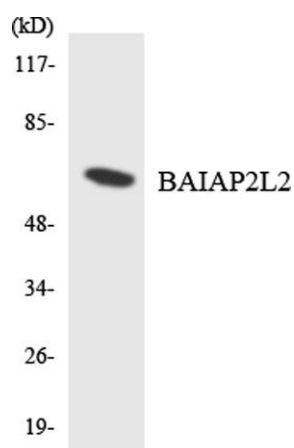
<b>Clonality</b>	Polyclonal
<b>Concentration</b>	1 mg/ml
<b>Observed band</b>	52kD
<b>Human Gene ID</b>	80115
<b>Human Swiss-Prot Number</b>	Q6UXY1
<b>Alternative Names</b>	BAIAP2L2; Brain-specific angiogenesis inhibitor 1-associated protein 2-like protein 2; BAI1-associated protein 2-like protein 2; Planar intestinal- and kidney-specific BAR domain protein; Pinkbar

### Background

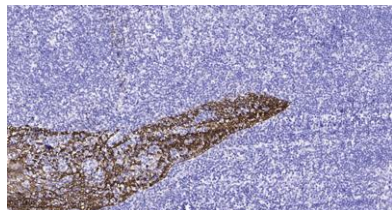
The protein encoded by this gene binds phosphoinositides and promotes the formation of planar or curved membrane structures. The encoded protein is found in RAB13-positive vesicles and at intercellular contacts with the plasma membrane. [provided by RefSeq, Dec 2012],



Western blot analysis of lysates from RAW264.7 cells, using BAIAP2L2 Antibody. The lane on the right is blocked with the synthesized peptide.



Western blot analysis of the lysates from HT-29 cells using BAIAP2L2 antibody.



**Immunohistochemical analysis of paraffin-embedded human tonsil. 1, Antibody was diluted at 1:200(4° overnight). 2, Tris-EDTA,pH9.0 was used for antigen retrieval. 3,Secondary antibody was diluted at 1:200(room temperature, 45min).**