

GPR157 rabbit pAb

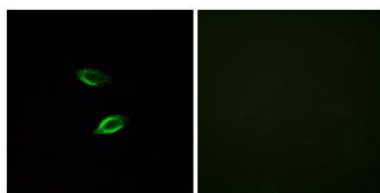
Cat#: orb770485 (Manual)

For research use only. Not intended for diagnostic use.

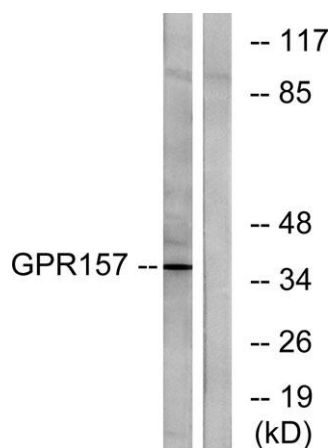
Product Name	GPR157 rabbit pAb
Host species	Rabbit
Applications	WB;IF;ELISA
Species Cross-Reactivity	Human;Rat;Mouse;
Recommended dilutions	Western Blot: 1/500 - 1/2000. Immunofluorescence: 1/200 - 1/1000. ELISA: 1/5000. Not yet tested in other applications.
Immunogen	The antiserum was produced against synthesized peptide derived from human GPR157. AA range:81-130
Specificity	GPR157 Polyclonal Antibody detects endogenous levels of GPR157 protein.
Formulation	Liquid in PBS containing 50% glycerol, 0.5% BSA and 0.02% sodium azide..
Storage	Store at -20°C. Avoid repeated freeze-thaw cycles.
Protein Name	Probable G-protein coupled receptor 157
Gene Name	GPR157
Cellular localization	Cell projection, cilium membrane ; Multi-pass membrane protein . Expressed in the primary cilia of radial glial progenitors (RGPs) exposed to the cerebrospinal fluid. .
Purification	The antibody was affinity-purified from rabbit antiserum by affinity-chromatography using epitope-specific immunogen.

Clonality	Polyclonal
Concentration	1 mg/ml
Observed band	37kD
Human Gene ID	80045
Human Swiss-Prot Number	Q5UAW9
Alternative Names	GPR157; Probable G-protein coupled receptor 157

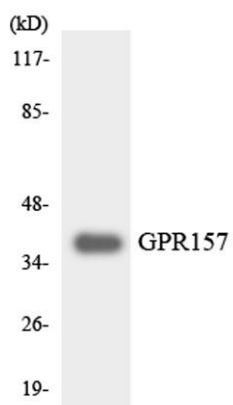
Background function:Orphan receptor.,similarity:Belongs to the G-protein coupled receptor 2 family.,



Immunofluorescence analysis of HUVEC cells, using GPR157 Antibody. The picture on the right is blocked with the synthesized peptide.



Western blot analysis of lysates from NIH/3T3 cells, using GPR157 Antibody. The lane on the right is blocked with the synthesized peptide.



Western blot analysis of the lysates from RAW264.7 cells using GPR157 antibody.