

**NCKX6 rabbit pAb****Cat#: orb770483 (Manual)**

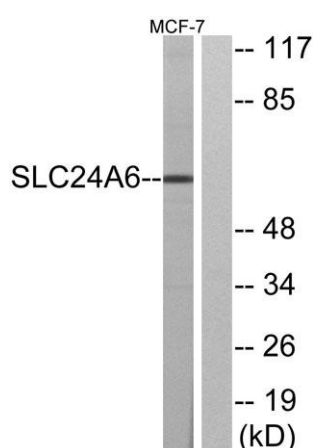
For research use only. Not intended for diagnostic use.

<b>Product Name</b>	NCKX6 rabbit pAb
<b>Host species</b>	Rabbit
<b>Applications</b>	WB;IHC;IF;ELISA
<b>Species Cross-Reactivity</b>	Human;Rat;Mouse;
<b>Recommended dilutions</b>	Western Blot: 1/500 - 1/2000. ELISA: 1/20000. Not yet tested in other applications.
<b>Immunogen</b>	The antiserum was produced against synthesized peptide derived from human SLC24A6. AA range:494-543
<b>Specificity</b>	NCKX6 Polyclonal Antibody detects endogenous levels of NCKX6 protein.
<b>Formulation</b>	Liquid in PBS containing 50% glycerol, 0.5% BSA and 0.02% sodium azide..
<b>Storage</b>	Store at -20°C. Avoid repeated freeze-thaw cycles.
<b>Protein Name</b>	Sodium/potassium/calcium exchanger 6
<b>Gene Name</b>	SLC24A6
<b>Cellular localization</b>	Mitochondrion inner membrane ; Multi-pass membrane protein .
<b>Purification</b>	The antibody was affinity-purified from rabbit antiserum by affinity-chromatography using epitope-specific immunogen.
<b>Clonality</b>	Polyclonal

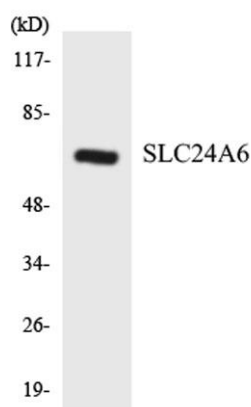
<b>Concentration</b>	1 mg/ml
<b>Observed band</b>	60kD
<b>Human Gene ID</b>	80024
<b>Human Swiss-Prot Number</b>	Q6J4K2
<b>Alternative Names</b>	SLC24A6; NCKX6; NCLX; Sodium/potassium/calcium exchanger 6; Na(+)/K(+)/Ca(2+)-exchange protein 6; Solute carrier family 24 member 6

### Background

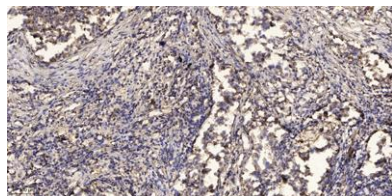
SLC24A6 belongs to a family of potassium-dependent sodium/calcium exchangers that maintain cellular calcium homeostasis through the electrogenic countertransport of 4 sodium ions for 1 calcium ion and 1 potassium ion (Cai and Lytton, 2004 [PubMed 14625281]).[supplied by OMIM, Mar 2008],



Western blot analysis of lysates from MCF-7 cells, using SLC24A6 Antibody. The lane on the right is blocked with the synthesized peptide.



Western blot analysis of the lysates from HeLa cells using SLC24A6 antibody.



**Immunohistochemical analysis of paraffin-embedded human Squamous cell carcinoma of lung. 1, Antibody was diluted at 1:200(4° overnight). 2, Tris-EDTA,pH9.0 was used for antigen retrieval. 3,Secondary antibody was diluted at 1:200(room temperature, 45min).**