

TCEAL4 rabbit pAb

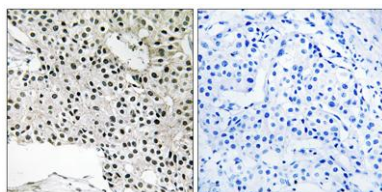
Cat#: orb770475 (Manual)

For research use only. Not intended for diagnostic use.

Product Name	TCEAL4 rabbit pAb
Host species	Rabbit
Applications	IHC;IF;ELISA
Species Cross-Reactivity	Human;Rat;Mouse;
Recommended dilutions	Immunohistochemistry: 1/100 - 1/300. ELISA: 1/20000. Not yet tested in other applications.
Immunogen	The antiserum was produced against synthesized peptide derived from human TCEAL4. AA range:166-215
Specificity	TCEAL4 Polyclonal Antibody detects endogenous levels of TCEAL4 protein.
Formulation	Liquid in PBS containing 50% glycerol, 0.5% BSA and 0.02% sodium azide..
Storage	Store at -20°C. Avoid repeated freeze-thaw cycles.
Protein Name	Transcription elongation factor A protein-like 4
Gene Name	TCEAL4
Cellular localization	Nucleus .
Purification	The antibody was affinity-purified from rabbit antiserum by affinity-chromatography using epitope-specific immunogen.
Clonality	Polyclonal

Concentration	1 mg/ml
Observed band	
Human Gene ID	79921
Human Swiss-Prot Number	Q96EI5
Alternative Names	TCEAL4; NPD017; Transcription elongation factor A protein-like 4; TCEA-like protein 4; Transcription elongation factor S-II protein-like 4

Background This gene encodes a member of the transcription elongation factor A (SII)-like (TCEAL) gene family. This family is comprised of nuclear phosphoproteins that modulate transcription in a promoter context-dependent manner. Multiple family members are located on the X chromosome. Alternatively splicing results in multiple transcript variants. There is a pseudogene for this gene on chromosome 13. [provided by RefSeq, Apr 2015],



Immunohistochemistry analysis of paraffin-embedded human breast carcinoma, using TCEAL4 Antibody. The picture on the right is blocked with the synthesized peptide.