

MAP-9 rabbit pAb**Cat#: orb770474 (Manual)**

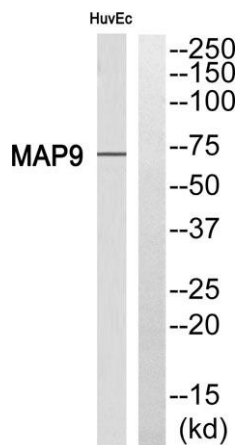
For research use only. Not intended for diagnostic use.

Product Name	MAP-9 rabbit pAb
Host species	Rabbit
Applications	WB;ELISA
Species Cross-Reactivity	Human;Rat;Mouse;
Recommended dilutions	Western Blot: 1/500 - 1/2000. ELISA: 1/40000. Not yet tested in other applications.
Immunogen	The antiserum was produced against synthesized peptide derived from human MAP9. AA range:121-170
Specificity	MAP-9 Polyclonal Antibody detects endogenous levels of MAP-9 protein.
Formulation	Liquid in PBS containing 50% glycerol, 0.5% BSA and 0.02% sodium azide..
Storage	Store at -20°C. Avoid repeated freeze-thaw cycles.
Protein Name	Microtubule-associated protein 9
Gene Name	MAP9
Cellular localization	Cytoplasm . Cytoplasm, cytoskeleton . Cytoplasm, cytoskeleton, spindle . Localizes to microtubules in interphase, associates with the mitotic spindle during mitosis, localizes to the central body during cytokinesis.
Purification	The antibody was affinity-purified from rabbit antiserum by affinity-chromatography using epitope-specific immunogen.

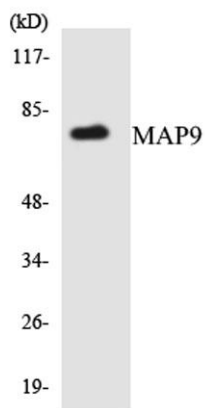
Clonality	Polyclonal
Concentration	1 mg/ml
Observed band	75kD
Human Gene ID	79884
Human Swiss-Prot Number	Q49MG5
Alternative Names	MAP9; ASAP; Microtubule-associated protein 9; Aster-associated protein

Background

ASAP is a microtubule-associated protein required for spindle function, mitotic progression, and cytokinesis (Saffin et al., 2005 [PubMed 16049101]).[supplied by OMIM, Mar 2008],



Western blot analysis of MAP9 Antibody. The lane on the right is blocked with the MAP9 peptide.



Western blot analysis of the lysates from HUVEC cells using MAP9 antibody.