

Oncogene TIM rabbit pAb

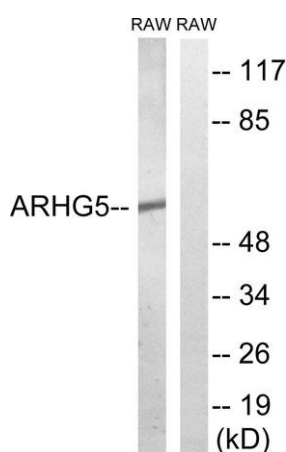
Cat#: orb770472 (Manual)

For research use only. Not intended for diagnostic use.

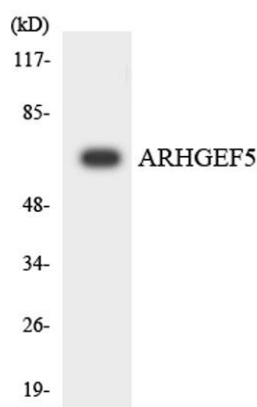
Product Name	Oncogene TIM rabbit pAb
Host species	Rabbit
Applications	WB;ELISA
Species Cross-Reactivity	Human;Mouse;Rat
Recommended dilutions	Western Blot: 1/500 - 1/2000. ELISA: 1/20000. Not yet tested in other applications.
Immunogen	The antiserum was produced against synthesized peptide derived from human ARHGEF5. AA range:191-240
Specificity	Oncogene TIM Polyclonal Antibody detects endogenous levels of Oncogene TIM protein.
Formulation	Liquid in PBS containing 50% glycerol, 0.5% BSA and 0.02% sodium azide..
Storage	Store at -20°C. Avoid repeated freeze-thaw cycles.
Protein Name	Rho guanine nucleotide exchange factor 5
Gene Name	ARHGEF5
Cellular localization	Cytoplasm . Nucleus . Cell projection, podosome .
Purification	The antibody was affinity-purified from rabbit antiserum by affinity-chromatography using epitope-specific immunogen.
Clonality	Polyclonal

Concentration	1 mg/ml
Observed band	60kD
Human Gene ID	7984
Human Swiss-Prot Number	Q12774
Alternative Names	ARHGEF5; TIM; Rho guanine nucleotide exchange factor 5; Ephexin-3; Guanine nucleotide regulatory protein TIM; Oncogene TIM; Transforming immortalized mammary oncogene; p60 TIM

Background Rho GTPases play a fundamental role in numerous cellular processes initiated by extracellular stimuli that work through G protein coupled receptors. The encoded protein may form a complex with G proteins and stimulate Rho-dependent signals. This protein may be involved in the control of cytoskeletal organization. [provided by RefSeq, Jul 2008],



Western blot analysis of lysates from RAW264.7 cells, using ARHGEF5 Antibody. The lane on the right is blocked with the synthesized peptide.



Western blot analysis of the lysates from K562 cells using ARHGEF5 antibody.