

SgK269 rabbit pAb**Cat#: orb770471 (Manual)**

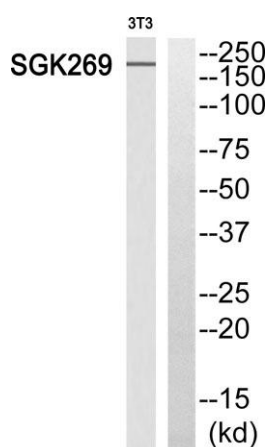
For research use only. Not intended for diagnostic use.

Product Name	SgK269 rabbit pAb
Host species	Rabbit
Applications	WB;IHC
Species Cross-Reactivity	Human;Rat;Mouse;
Recommended dilutions	WB 1:500-2000;IHC-p 1:50-300
Immunogen	The antiserum was produced against synthesized peptide derived from human SGK269. AA range:111-160
Specificity	SgK269 Polyclonal Antibody detects endogenous levels of SgK269 protein.
Formulation	Liquid in PBS containing 50% glycerol, 0.5% BSA and 0.02% sodium azide..
Storage	Store at -20°C. Avoid repeated freeze-thaw cycles.
Protein Name	Pseudopodium-enriched atypical kinase 1
Gene Name	PEAK1
Cellular localization	Cytoplasm, cytoskeleton . Cell junction, focal adhesion . Colocalizes with F-actin in serum-rich medium (PubMed:20534451). Actin colocalization is reduced during serum starvation (PubMed:20534451). .
Purification	The antibody was affinity-purified from rabbit antiserum by affinity-chromatography using epitope-specific immunogen.

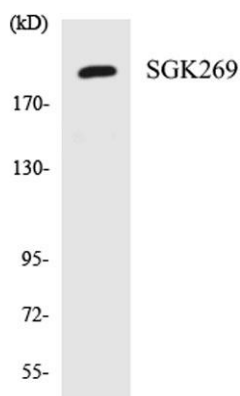
Clonality	Polyclonal
Concentration	1 mg/ml
Observed band	195kD
Human Gene ID	79834
Human Swiss-Prot Number	Q9H792
Alternative Names	PEAK1; KIAA2002; Pseudopodium-enriched atypical kinase 1; Sugen kinase 269; Tyrosine-protein kinase SgK269

Background

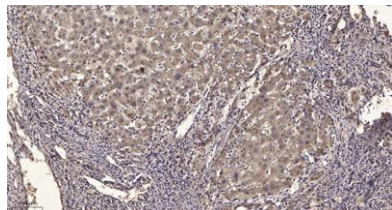
This gene encodes a non-receptor tyrosine kinase that is a member of the new kinase family three (NFK3) family. In migrating cells, the encoded protein is associated with the actin cytoskeleton and focal adhesions and promotes developing focal adhesion elongation. This protein may play a role in the regulation of cell migration, proliferation and cancer metastasis. [provided by RefSeq, Mar 2014],



Western blot analysis of SGK269 Antibody. The lane on the right is blocked with the SGK269 peptide.



Western blot analysis of the lysates from 293 cells using SGK269 antibody.



Immunohistochemical analysis of paraffin-embedded human liver cancer. 1, Antibody was diluted at 1:200(4° overnight). 2, Tris-EDTA,pH9.0 was used for antigen retrieval. 3,Secondary antibody was diluted at 1:200(room temperature, 45min).