

LRRK1 rabbit pAb

Cat#: orb770466 (Manual)

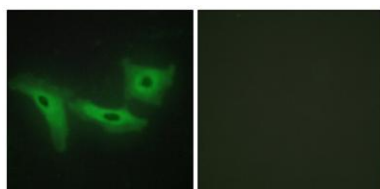
For research use only. Not intended for diagnostic use.

Product Name	LRRK1 rabbit pAb
Host species	Rabbit
Applications	IHC;IF;ELISA
Species Cross-Reactivity	Human;Rat;Mouse;
Recommended dilutions	Immunohistochemistry: 1/100 - 1/300. Immunofluorescence: 1/200 - 1/1000. ELISA: 1/5000. Not yet tested in other applications.
Immunogen	The antiserum was produced against synthesized peptide derived from human LRRK1. AA range:361-410
Specificity	LRRK1 Polyclonal Antibody detects endogenous levels of LRRK1 protein.
Formulation	Liquid in PBS containing 50% glycerol, 0.5% BSA and 0.02% sodium azide..
Storage	Store at -20°C. Avoid repeated freeze-thaw cycles.
Protein Name	Leucine-rich repeat serine/threonine-protein kinase 1
Gene Name	LRRK1
Cellular localization	Cytoplasm .
Purification	The antibody was affinity-purified from rabbit antiserum by affinity-chromatography using epitope-specific immunogen.
Clonality	Polyclonal

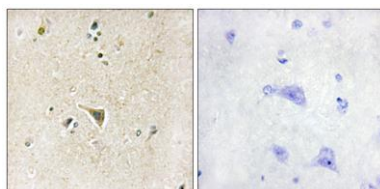
Concentration	1 mg/ml
Observed band	
Human Gene ID	79705
Human Swiss-Prot Number	Q38SD2
Alternative Names	LRRK1; KIAA1790; Leucine-rich repeat serine/threonine-protein kinase 1

Background

catalytic activity:ATP + a protein = ADP + a phosphoprotein.,cofactor:Magnesium or manganese.,enzyme regulation:Binding of GTP stimulates kinase activity.,PTM:Autophosphorylated.,similarity:Belongs to the protein kinase superfamily. TKL Ser/Thr protein kinase family. ROCO subfamily.,similarity:Contains 1 protein kinase domain.,similarity:Contains 1 Roc domain.,similarity:Contains 11 LRR (leucine-rich) repeats.,similarity:Contains 4 ANK repeats.,



Immunofluorescence analysis of HeLa cells, using LRRK1 Antibody. The picture on the right is blocked with the synthesized peptide.



Immunohistochemistry analysis of paraffin-embedded human brain tissue, using LRRK1 Antibody. The picture on the right is blocked with the synthesized peptide.



Explore. Bioreagents.

www.biorbyt.com