

Cep97 rabbit pAb**Cat#: orb770459 (Manual)**

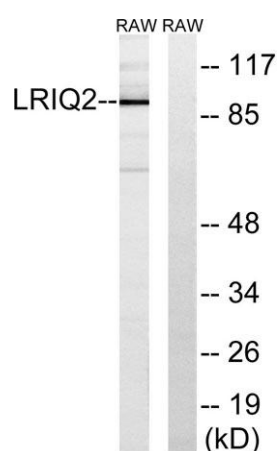
For research use only. Not intended for diagnostic use.

Product Name	Cep97 rabbit pAb
Host species	Rabbit
Applications	WB;IHC;IF;ELISA
Species Cross-Reactivity	Human;Mouse
Recommended dilutions	Western Blot: 1/500 - 1/2000. Immunohistochemistry: 1/100 - 1/300. ELISA: 1/20000. Not yet tested in other applications.
Immunogen	The antiserum was produced against synthesized peptide derived from human CEP97. AA range:581-630
Specificity	Cep97 Polyclonal Antibody detects endogenous levels of Cep97 protein.
Formulation	Liquid in PBS containing 50% glycerol, 0.5% BSA and 0.02% sodium azide..
Storage	Store at -20°C. Avoid repeated freeze-thaw cycles.
Protein Name	Centrosomal protein of 97 kDa
Gene Name	CEP97
Cellular localization	Cytoplasm, cytoskeleton, microtubule organizing center, centrosome . Cytoplasm, cytoskeleton, microtubule organizing center, centrosome, centriole . Recruited at the distal end of the mother centriole by MPHOSPH9. .
Purification	The antibody was affinity-purified from rabbit antiserum by affinity-chromatography using epitope-specific immunogen.

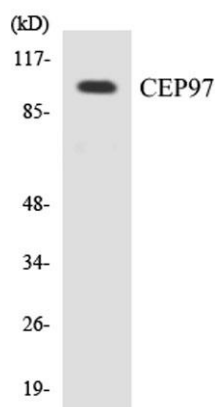
Clonality	Polyclonal
Concentration	1 mg/ml
Observed band	97kD
Human Gene ID	79598
Human Swiss-Prot Number	Q8IW35
Alternative Names	CEP97; LRRIQ2; Centrosomal protein of 97 kDa; Cep97; Leucine-rich repeat and IQ domain-containing protein 2

Background

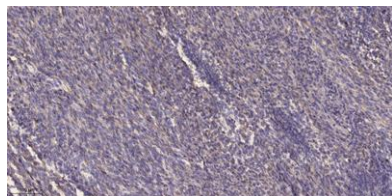
function:Collaborates with cep110, being involved in the suppression of a cilia assembly program. Required for correct spindle formation and has a role in cytokinesis. Required for recruitment of cep110 to the centrosome.,PTM:Phosphorylated upon DNA damage, probably by ATM or ATR.,similarity:Contains 1 IQ domain.,similarity:Contains 6 LRR (leucine-rich) repeats.,subunit:Interacts with CALM1 and CEP110.,



Western blot analysis of lysates from RAW264.7 cells, using CEP97 Antibody. The lane on the right is blocked with the synthesized peptide.



Western blot analysis of the lysates from COLO205 cells using CEP97 antibody.



Immunohistochemical analysis of paraffin-embedded human Colon cancer. 1, Antibody was diluted at 1:200(4° overnight). 2, Tris-EDTA,pH9.0 was used for antigen retrieval. 3,Secondary antibody was diluted at 1:200(room temperature, 45min).