

## Nox5 rabbit pAb

**Cat#: orb770451 (Manual)**

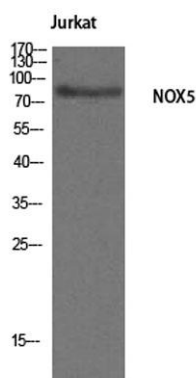
For research use only. Not intended for diagnostic use.

<b>Product Name</b>	Nox5 rabbit pAb
<b>Host species</b>	Rabbit
<b>Applications</b>	WB;IHC;IF;ELISA
<b>Species Cross-Reactivity</b>	Human;Rat;Mouse;
<b>Recommended dilutions</b>	Western Blot: 1/500 - 1/2000. Immunohistochemistry: 1/100 - 1/300. ELISA: 1/40000. Not yet tested in other applications.
<b>Immunogen</b>	The antiserum was produced against synthesized peptide derived from human NOX5. AA range:677-726
<b>Specificity</b>	Nox5 Polyclonal Antibody detects endogenous levels of Nox5 protein.
<b>Formulation</b>	Liquid in PBS containing 50% glycerol, 0.5% BSA and 0.02% sodium azide..
<b>Storage</b>	Store at -20°C. Avoid repeated freeze-thaw cycles.
<b>Protein Name</b>	NADPH oxidase 5
<b>Gene Name</b>	NOX5
<b>Cellular localization</b>	Membrane ; Multi-pass membrane protein .; [Isoform v2]: Endoplasmic reticulum.; [Isoform v5]: Endoplasmic reticulum.
<b>Purification</b>	The antibody was affinity-purified from rabbit antiserum by affinity-chromatography using       epitope-specific immunogen.
<b>Clonality</b>	Polyclonal

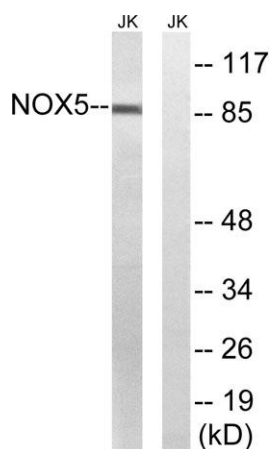
<b>Concentration</b>	1 mg/ml
<b>Observed band</b>	86kD
<b>Human Gene ID</b>	79400
<b>Human Swiss-Prot Number</b>	Q96PH1
<b>Alternative Names</b>	NOX5; NADPH oxidase 5

### Background

This gene is predominantly expressed in the testis and lymphocyte-rich areas of spleen and lymph nodes. It encodes a calcium-dependen NADPH oxidase that generates superoxide, and functions as a calcium-dependent proton channel that may regulate redox-dependent processes in lymphocytes and spermatozoa. Alternatively spliced transcript variants encoding different isoforms have been described for this gene. [provided by RefSeq, Oct 2011],



**Western Blot analysis of Jurkat cells using Nox5 Polyclonal Antibody**



**Western blot analysis of lysates from Jurkat cells, using NOX5 Antibody. The lane on the right is blocked with the synthesized peptide.**