

DEC2 rabbit pAb

Cat#: orb770449 (Manual)

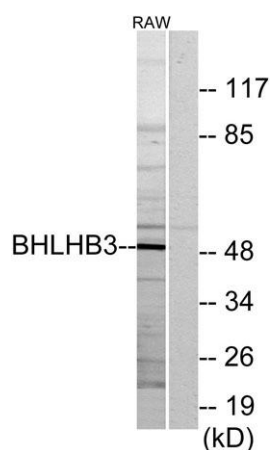
For research use only. Not intended for diagnostic use.

Product Name	DEC2 rabbit pAb
Host species	Rabbit
Applications	WB;IHC;IF;ELISA
Species Cross-Reactivity	Human;Mouse;Rat
Recommended dilutions	Western Blot: 1/500 - 1/2000. Immunohistochemistry: 1/100 - 1/300. ELISA: 1/40000. Not yet tested in other applications.
Immunogen	The antiserum was produced against synthesized peptide derived from human BHLHB3. AA range:1-50
Specificity	DEC2 Polyclonal Antibody detects endogenous levels of 40879 protein.
Formulation	Liquid in PBS containing 50% glycerol, 0.5% BSA and 0.02% sodium azide..
Storage	Store at -20°C. Avoid repeated freeze-thaw cycles.
Protein Name	Class E basic helix-loop-helix protein 41
Gene Name	BHLHE41
Cellular localization	Nucleus .
Purification	The antibody was affinity-purified from rabbit antiserum by affinity-chromatography using epitope-specific immunogen.
Clonality	Polyclonal

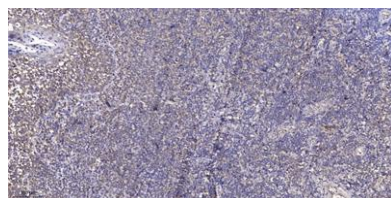
Concentration	1 mg/ml
Observed band	50kD
Human Gene ID	79365
Human Swiss-Prot Number	Q9C0J9
Alternative Names	BHLHE41; BHLHB3; DEC2; SHARP1; Class E basic helix-loop-helix protein 41; bHLHe41; Class B basic helix-loop-helix protein 3; bHLHb3; Differentially expressed in chondrocytes protein 2; hDEC2; Enhancer-of-split and hairy-related protein 1; S

Background

This gene encodes a basic helix-loop-helix protein expressed in various tissues. The encoded protein can interact with ARNTL or compete for E-box binding sites in the promoter of PER1 and repress CLOCK/ARNTL's transactivation of PER1. This gene is believed to be involved in the control of circadian rhythm and cell differentiation. Defects in this gene are associated with the short sleep phenotype. [provided by RefSeq, Feb 2014],



Western blot analysis of lysates from RAW264.7 cells, using BHLHB3 Antibody. The lane on the right is blocked with the synthesized peptide.



Immunohistochemical analysis of paraffin-embedded human tonsil. 1, Antibody was diluted at 1:200(4° overnight). 2, Tris-EDTA,pH9.0 was used for antigen retrieval. 3,Secondary antibody was diluted at 1:200(room temperature, 45min).