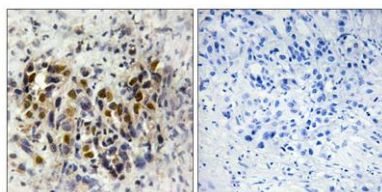


IRX3 rabbit pAb**Cat#: orb770445 (Manual)**

For research use only. Not intended for diagnostic use.

Product Name	IRX3 rabbit pAb
Host species	Rabbit
Applications	IHC;IF;ELISA
Species Cross-Reactivity	Human;Mouse
Recommended dilutions	Immunohistochemistry: 1/100 - 1/300. ELISA: 1/20000. Not yet tested in other applications.
Immunogen	The antiserum was produced against synthesized peptide derived from human IRX3. AA range:271-320
Specificity	IRX3 Polyclonal Antibody detects endogenous levels of IRX3 protein.
Formulation	Liquid in PBS containing 50% glycerol, 0.5% BSA and 0.02% sodium azide..
Storage	Store at -20°C. Avoid repeated freeze-thaw cycles.
Protein Name	Iroquois-class homeodomain protein IRX-3
Gene Name	IRX3
Cellular localization	Nucleus .
Purification	The antibody was affinity-purified from rabbit antiserum by affinity-chromatography using epitope-specific immunogen.
Clonality	Polyclonal

Concentration	1 mg/ml
Observed band	
Human Gene ID	79191
Human Swiss-Prot Number	P78415
Alternative Names	IRX3; IRXB1; Iroquois-class homeodomain protein IRX-3; Homeodomain protein IRXB1; Iroquois homeobox protein 3
Background	IRX3 is a member of the Iroquois homeobox gene family (see IRX1; MIM 606197) and plays a role in an early step of neural development (Bellefroid et al., 1998 [PubMed 9427753]). Members of this family appear to play multiple roles during pattern formation of vertebrate embryos (Lewis et al., 1999 [PubMed 10370142]).[supplied by OMIM, Aug 2009],



Immunohistochemistry analysis of paraffin-embedded human breast carcinoma tissue, using IRX3 Antibody. The picture on the right is blocked with the synthesized peptide.