

TRAPPC6A rabbit pAb**Cat#: orb770440 (Manual)**

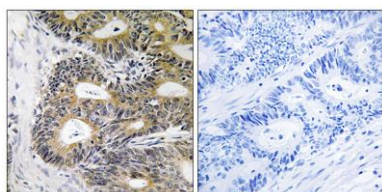
For research use only. Not intended for diagnostic use.

Product Name	TRAPPC6A rabbit pAb
Host species	Rabbit
Applications	IHC;IF;ELISA
Species Cross-Reactivity	Human;Rat;Mouse;
Recommended dilutions	Immunohistochemistry: 1/100 - 1/300. ELISA: 1/40000. Not yet tested in other applications.
Immunogen	The antiserum was produced against synthesized peptide derived from human TRAPPC6A. AA range:31-80
Specificity	TRAPPC6A Polyclonal Antibody detects endogenous levels of TRAPPC6A protein.
Formulation	Liquid in PBS containing 50% glycerol, 0.5% BSA and 0.02% sodium azide..
Storage	Store at -20°C. Avoid repeated freeze-thaw cycles.
Protein Name	Trafficking protein particle complex subunit 6A
Gene Name	TRAPPC6A
Cellular localization	Golgi apparatus, cis-Golgi network . Endoplasmic reticulum .
Purification	The antibody was affinity-purified from rabbit antiserum by affinity-chromatography using epitope-specific immunogen.
Clonality	Polyclonal

Concentration	1 mg/ml
Observed band	
Human Gene ID	79090
Human Swiss-Prot Number	O75865
Alternative Names	TRAPPC6A; HSPC289; Trafficking protein particle complex subunit 6A; TRAPP complex subunit 6A

Background

This gene encodes a component of the trafficking protein particle complex, which tethers transport vesicles to the cis-Golgi membrane. Loss of expression of the related gene in mouse affects coat and eye pigmentation, suggesting that the encoded protein may be involved in melanosome biogenesis. Alternatively spliced transcript variants encoding multiple isoforms have been observed for this gene. [provided by RefSeq, Aug 2012],



Immunohistochemistry analysis of paraffin-embedded human colon carcinoma, using TRAPPC6A Antibody. The picture on the right is blocked with the synthesized peptide.