

**Frizzled-5 rabbit pAb****Cat#: orb770435 (Manual)**

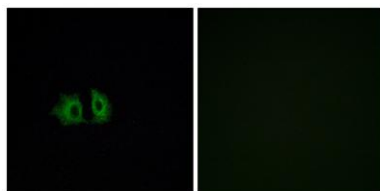
For research use only. Not intended for diagnostic use.

<b>Product Name</b>	Frizzled-5 rabbit pAb
<b>Host species</b>	Rabbit
<b>Applications</b>	WB;IHC;IF;ELISA
<b>Species Cross-Reactivity</b>	Human;Mouse;Rat
<b>Recommended dilutions</b>	Western Blot: 1/500 - 1/2000. Immunohistochemistry: 1/100 - 1/300. Immunofluorescence: 1/200 - 1/1000. ELISA: 1/20000. Not yet tested in other applications.
<b>Immunogen</b>	The antiserum was produced against synthesized peptide derived from human FZD5. AA range:461-510
<b>Specificity</b>	Frizzled-5 Polyclonal Antibody detects endogenous levels of Frizzled-5 protein.
<b>Formulation</b>	Liquid in PBS containing 50% glycerol, 0.5% BSA and 0.02% sodium azide..
<b>Storage</b>	Store at -20°C. Avoid repeated freeze-thaw cycles.
<b>Protein Name</b>	Frizzled-5
<b>Gene Name</b>	FZD5
<b>Cellular localization</b>	Cell membrane ; Multi-pass membrane protein . Golgi apparatus membrane ; Multi-pass membrane protein . Cell junction, synapse . Perikaryon . Cell projection, dendrite . Cell projection, axon . Localized at the plasma membrane and also found at the Golgi. .
<b>Purification</b>	The antibody was affinity-purified from rabbit antiserum by affinity-chromatography using epitope-specific immunogen.

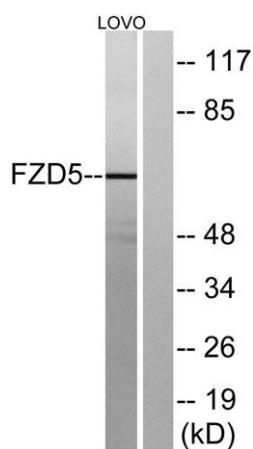
<b>Clonality</b>	Polyclonal
<b>Concentration</b>	1 mg/ml
<b>Observed band</b>	65kD
<b>Human Gene ID</b>	7855
<b>Human Swiss-Prot Number</b>	Q13467
<b>Alternative Names</b>	FZD5; C2orf31; Frizzled-5; Fz-5; hFz5; FzE5

### Background

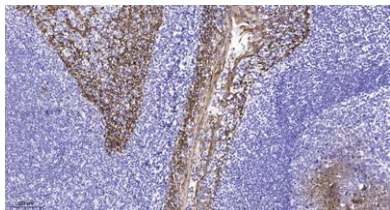
frizzled class receptor 5(FZD5) Homo sapiens Members of the 'frizzled' gene family encode 7-transmembrane domain proteins that are receptors for Wnt signaling proteins. The FZD5 protein is believed to be the receptor for the Wnt5A ligand. [provided by RefSeq, Jul 2008],



Immunofluorescence analysis of A549 cells, using FZD5 Antibody. The picture on the right is blocked with the synthesized peptide.



Western blot analysis of lysates from LOVO cells, using FZD5 Antibody. The lane on the right is blocked with the synthesized peptide.



**Immunohistochemical analysis of paraffin-embedded human tonsil. 1, Antibody was diluted at 1:200(4° overnight). 2, Tris-EDTA,pH9.0 was used for antigen retrieval. 3,Secondary antibody was diluted at 1:200(room temperature, 45min).**