

**Cacna2d1 rabbit pAb****Cat#: orb770431 (Manual)**

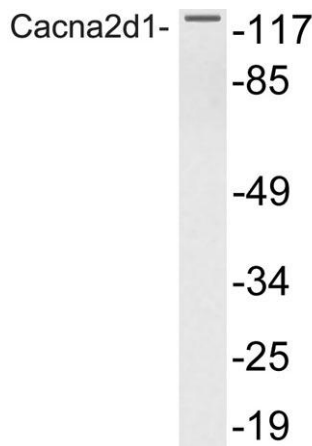
For research use only. Not intended for diagnostic use.

<b>Product Name</b>	Cacna2d1 rabbit pAb
<b>Host species</b>	Rabbit
<b>Applications</b>	WB;ELISA
<b>Species Cross-Reactivity</b>	Human;Mouse;Rat
<b>Recommended dilutions</b>	Western Blot: 1/500 - 1/2000. ELISA: 1/10000. Not yet tested in other applications.
<b>Immunogen</b>	The antiserum was produced against synthesized peptide derived from human Cacna2d1. AA range:90-139
<b>Specificity</b>	Cacna2d1 Polyclonal Antibody detects endogenous levels of Cacna2d1 protein.
<b>Formulation</b>	Liquid in PBS containing 50% glycerol, 0.5% BSA and 0.02% sodium azide..
<b>Storage</b>	Store at -20°C. Avoid repeated freeze-thaw cycles.
<b>Protein Name</b>	Voltage-dependent calcium channel subunit alpha-2/delta-1
<b>Gene Name</b>	CACNA2D1
<b>Cellular localization</b>	Membrane ; Single-pass type I membrane protein .
<b>Purification</b>	The antibody was affinity-purified from rabbit antiserum by affinity-chromatography using epitope-specific immunogen.
<b>Clonality</b>	Polyclonal

<b>Concentration</b>	1 mg/ml
<b>Observed band</b>	123kD
<b>Human Gene ID</b>	781
<b>Human Swiss-Prot Number</b>	P54289
<b>Alternative Names</b>	CACNA2D1; CACNL2A; CCHL2A; MHS3; Voltage-dependent calcium channel subunit alpha-2/delta-1; Voltage-gated calcium channel subunit alpha-2/delta-1

**Background**

calcium voltage-gated channel auxiliary subunit alpha2delta 1(CACNA2D1) Homo sapiens The preproprotein encoded by this gene is cleaved into multiple chains that comprise the alpha-2 and delta subunits of the voltage-dependent calcium channel complex. Calcium channels mediate the influx of calcium ions into the cell upon membrane polarization. Mutations in this gene can cause cardiac deficiencies, including Brugada syndrome and short QT syndrome. Alternate splicing results in multiple transcript variants, some of which may lack the delta subunit portion. [provided by RefSeq, Nov 2014],



Western blot analysis of lysate from NIH/3T3 cells, using Cacna2d1 antibody.