

ZnT-1 rabbit pAb**Cat#: orb770425 (Manual)**

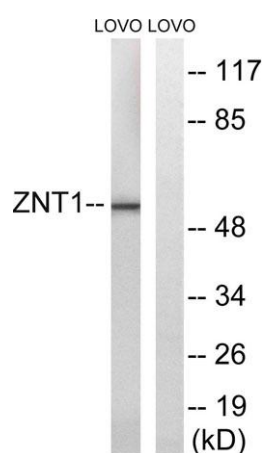
For research use only. Not intended for diagnostic use.

Product Name	ZnT-1 rabbit pAb
Host species	Rabbit
Applications	WB;IHC;IF;ELISA
Species Cross-Reactivity	Human;Rat;Mouse;
Recommended dilutions	Western Blot: 1/500 - 1/2000. Immunohistochemistry: 1/100 - 1/300. ELISA: 1/5000. Not yet tested in other applications.
Immunogen	The antiserum was produced against synthesized peptide derived from human SLC30A1. AA range:201-250
Specificity	ZnT-1 Polyclonal Antibody detects endogenous levels of ZnT-1 protein.
Formulation	Liquid in PBS containing 50% glycerol, 0.5% BSA and 0.02% sodium azide..
Storage	Store at -20°C. Avoid repeated freeze-thaw cycles.
Protein Name	Zinc transporter 1
Gene Name	SLC30A1
Cellular localization	Cell membrane ; Multi-pass membrane protein .
Purification	The antibody was affinity-purified from rabbit antiserum by affinity-chromatography using epitope-specific immunogen.
Clonality	Polyclonal

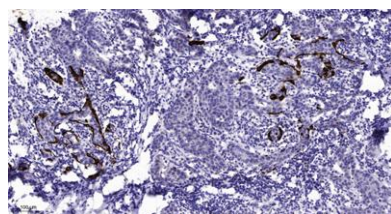
Concentration	1 mg/ml
Observed band	55kD
Human Gene ID	7779
Human Swiss-Prot Number	Q9Y6M5
Alternative Names	SLC30A1; ZNT1; Zinc transporter 1; ZnT-1; Solute carrier family 30 member 1

Background

function:May be involved in zinc transport out of the cell.,similarity:Belongs to the cation diffusion facilitator (CDF) transporter (TC 2.A.4) family. SLC30A subfamily.,subunit:Multimer.,



Western blot analysis of lysates from LOVO cells, using SLC30A1 Antibody. The lane on the right is blocked with the synthesized peptide.



Immunohistochemical analysis of paraffin-embedded human Breast cancer. 1, Antibody was diluted at 1:200(4° overnight). 2, Tris-EDTA,pH9.0 was used for antigen retrieval. 3,Secondary antibody was diluted at 1:200(room temperature, 45min).