

14-3-3 β/ζ (phospho Ser184/186) rabbit pAb**Cat#: orb770401 (Manual)**

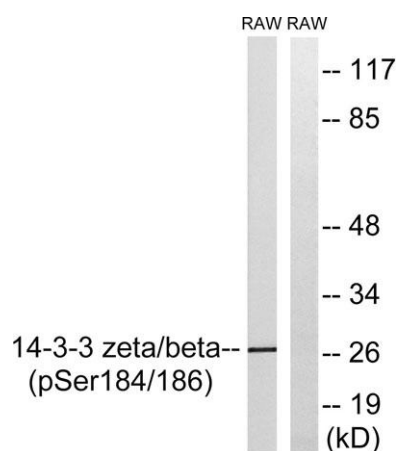
For research use only. Not intended for diagnostic use.

Product Name	14-3-3 β/ζ (phospho Ser184/186) rabbit pAb
Host species	Rabbit
Applications	WB;ELISA
Species Cross-Reactivity	Human;Mouse;Rat
Recommended dilutions	Western Blot: 1/500 - 1/2000. ELISA: 1/5000. Not yet tested in other applications.
Immunogen	The antiserum was produced against synthesized peptide derived from human 14-3-3 beta/zeta around the phosphorylation site of Ser184/186. AA range:151-200
Specificity	Phospho-14-3-3 β/ζ (S184/186) Polyclonal Antibody detects endogenous levels of 14-3-3 β/ζ protein only when phosphorylated at S184/186.
Formulation	Liquid in PBS containing 50% glycerol, 0.5% BSA and 0.02% sodium azide..
Storage	Store at -20°C. Avoid repeated freeze-thaw cycles.
Protein Name	14-3-3 protein beta/alpha/14-3-3 protein zeta/delta
Gene Name	YWHAB/YWHAZ
Cellular localization	Cytoplasm . Melanosome . Located to stage I to stage IV melanosomes.
Purification	The antibody was affinity-purified from rabbit antiserum by affinity-chromatography using epitope-specific immunogen.
Clonality	Polyclonal

Concentration	1 mg/ml
Observed band	28kD
Human Gene ID	7534/7529
Human Swiss-Prot Number	P63104/P31946
Alternative Names	YWHAZ; 14-3-3 protein zeta/delta; Protein kinase C inhibitor protein 1; KCIP-1; YWHAB; 14-3-3 protein beta/alpha; Protein 1054; Protein kinase C inhibitor protein 1; KCIP-1

Background

This gene product belongs to the 14-3-3 family of proteins which mediate signal transduction by binding to phosphoserine-containing proteins. This highly conserved protein family is found in both plants and mammals, and this protein is 99% identical to the mouse, rat and sheep orthologs. The encoded protein interacts with IRS1 protein, suggesting a role in regulating insulin sensitivity. Several transcript variants that differ in the 5' UTR but that encode the same protein have been identified for this gene. [provided by RefSeq, Oct 2008],



Western blot analysis of lysates from RAW264.7 cells treated with UV 15', using 14-3-3 beta/zeta (Phospho-Ser184/186) Antibody. The lane on the right is blocked with the phospho peptide.