

UBE2G1 rabbit pAb**Cat#: orb770346 (Manual)**

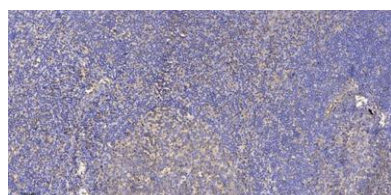
For research use only. Not intended for diagnostic use.

| | |
|---------------------------------|---|
| Product Name | UBE2G1 rabbit pAb |
| Host species | Rabbit |
| Applications | IHC;IF;ELISA |
| Species Cross-Reactivity | Human;Mouse;Rat |
| Recommended dilutions | Immunohistochemistry: 1/100 - 1/300. ELISA: 1/40000. Not yet tested in other applications. |
| Immunogen | Synthesized peptide derived from the Internal region of human UBE2G1. |
| Specificity | UBE2G1 Polyclonal Antibody detects endogenous levels of UBE2G1 protein. |
| Formulation | Liquid in PBS containing 50% glycerol, 0.5% BSA and 0.02% sodium azide.. |
| Storage | Store at -20°C. Avoid repeated freeze-thaw cycles. |
| Protein Name | Ubiquitin-conjugating enzyme E2 G1 |
| Gene Name | UBE2G1 |
| Cellular localization | cytoplasm,extracellular exosome, |
| Purification | The antibody was affinity-purified from rabbit antiserum by affinity-chromatography using epitope-specific immunogen. |
| Clonality | Polyclonal |

| | |
|--------------------------------|---|
| Concentration | 1 mg/ml |
| Observed band | |
| Human Gene ID | 7326 |
| Human Swiss-Prot Number | P62253 |
| Alternative Names | UBE2G1; UBE2G; Ubiquitin-conjugating enzyme E2 G1; E217K; UBC7; Ubiquitin carrier protein G1; Ubiquitin-protein ligase G1 |

Background

The modification of proteins with ubiquitin is an important cellular mechanism for targeting abnormal or short-lived proteins for degradation. Ubiquitination involves at least three classes of enzymes: ubiquitin-activating enzymes, or E1s, ubiquitin-conjugating enzymes, or E2s, and ubiquitin-protein ligases, or E3s. This gene encodes a member of the E2 ubiquitin-conjugating enzyme family and catalyzes the covalent attachment of ubiquitin to other proteins. The protein may be involved in degradation of muscle-specific proteins. [provided by RefSeq, Jul 2008],



Immunohistochemical analysis of paraffin-embedded human tonsil. 1, Antibody was diluted at 1:200(4° overnight). 2, Tris-EDTA,pH9.0 was used for antigen retrieval. 3,Secondary antibody was diluted at 1:200(room temperature, 30min).