

C1s rabbit pAb

Cat#: orb770314 (Manual)

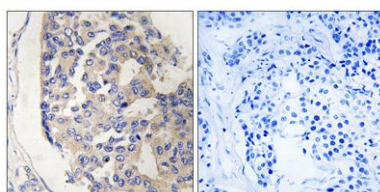
For research use only. Not intended for diagnostic use.

Product Name	C1s rabbit pAb
Host species	Rabbit
Applications	WB;IHC;IF;ELISA
Species Cross-Reactivity	Human;Rat;Mouse;
Recommended dilutions	Western Blot: 1/500 - 1/2000. Immunohistochemistry: 1/100 - 1/300. ELISA: 1/40000. Not yet tested in other applications.
Immunogen	The antiserum was produced against synthesized peptide derived from human C1S. AA range:541-590
Specificity	C1s Polyclonal Antibody detects endogenous levels of C1s protein.
Formulation	Liquid in PBS containing 50% glycerol, 0.5% BSA and 0.02% sodium azide..
Storage	Store at -20°C. Avoid repeated freeze-thaw cycles.
Protein Name	Complement C1s subcomponent
Gene Name	C1S
Cellular localization	extracellular region,extracellular exosome,blood microparticle,
Purification	The antibody was affinity-purified from rabbit antiserum by affinity-chromatography using epitope-specific immunogen.
Clonality	Polyclonal

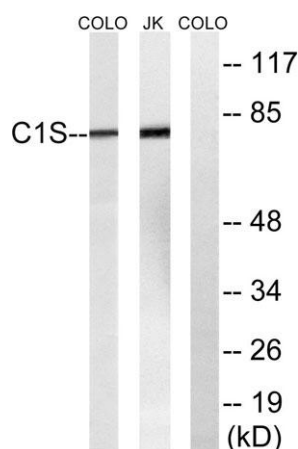
Concentration	1 mg/ml
Observed band	77kD
Human Gene ID	716
Human Swiss-Prot Number	P09871
Alternative Names	C1S; Complement C1s subcomponent; C1 esterase; Complement component 1 subcomponent s

Background

This gene encodes a serine protease, which is a major constituent of the human complement subcomponent C1. C1s associates with two other complement components C1r and C1q in order to yield the first component of the serum complement system. Defects in this gene are the cause of selective C1s deficiency. [provided by RefSeq, Mar 2009],



Immunohistochemistry analysis of paraffin-embedded human breast carcinoma tissue, using C1S Antibody. The picture on the right is blocked with the synthesized peptide.



Western blot analysis of lysates from Jurkat and COLO cells, using C1S Antibody. The lane on the right is blocked with the synthesized peptide.