

Topo II β rabbit pAb

Cat#: orb770294 (Manual)

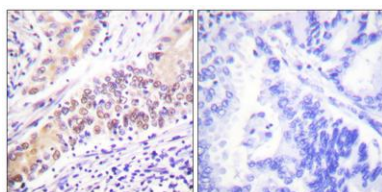
For research use only. Not intended for diagnostic use.

Product Name	Topo II β rabbit pAb
Host species	Rabbit
Applications	WB;IHC;IF;ELISA
Species Cross-Reactivity	Human;Mouse
Recommended dilutions	Western Blot: 1/500 - 1/2000. Immunohistochemistry: 1/100 - 1/300. ELISA: 1/20000. Not yet tested in other applications.
Immunogen	The antiserum was produced against synthesized peptide derived from human TOP2B. AA range:1-50
Specificity	Topo II β Polyclonal Antibody detects endogenous levels of Topo II β protein.
Formulation	Liquid in PBS containing 50% glycerol, 0.5% BSA and 0.02% sodium azide..
Storage	Store at -20°C. Avoid repeated freeze-thaw cycles.
Protein Name	DNA topoisomerase 2-beta
Gene Name	TOP2B
Cellular localization	Nucleus, nucleolus . Nucleus, nucleoplasm . Nucleus .
Purification	The antibody was affinity-purified from rabbit antiserum by affinity-chromatography using epitope-specific immunogen.
Clonality	Polyclonal

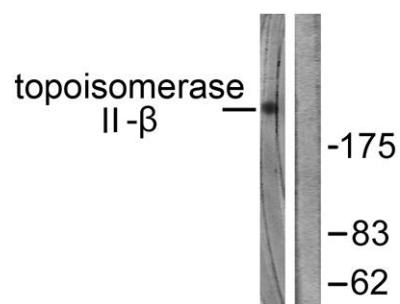
Concentration	1 mg/ml
Observed band	183kD
Human Gene ID	7155
Human Swiss-Prot Number	Q02880
Alternative Names	TOP2B; DNA topoisomerase 2-beta; DNA topoisomerase II; beta isozyme

Background

This gene encodes a DNA topoisomerase, an enzyme that controls and alters the topologic states of DNA during transcription. This nuclear enzyme is involved in processes such as chromosome condensation, chromatid separation, and the relief of torsional stress that occurs during DNA transcription and replication. It catalyzes the transient breaking and rejoining of two strands of duplex DNA which allows the strands to pass through one another, thus altering the topology of DNA. Two forms of this enzyme exist as likely products of a gene duplication event. The gene encoding this form, beta, is localized to chromosome 3 and the alpha form is localized to chromosome 17. The gene encoding this enzyme functions as the target for several anticancer agents and a variety of mutations in this gene have been associated with the development of drug resistance. Reduced activity of this enzyme may also pla



Immunohistochemistry analysis of paraffin-embedded human lung carcinoma tissue, using TOP2B Antibody. The picture on the right is blocked with the synthesized peptide.



Western blot analysis of lysates from Jurkat cells, using TOP2B Antibody. The lane on the right is blocked with the synthesized peptide.