

Thymidine Kinase rabbit pAb

Cat#: orb770272 (Manual)

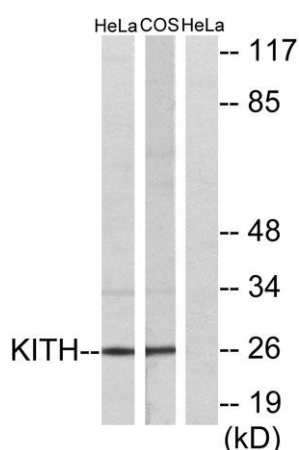
For research use only. Not intended for diagnostic use.

Product Name	Thymidine Kinase rabbit pAb
Host species	Rabbit
Applications	WB;IHC
Species Cross-Reactivity	Human;Monkey
Recommended dilutions	WB 1:500-2000;IHC-p 1:50-300
Immunogen	The antiserum was produced against synthesized peptide derived from human KITH. AA range:161-210
Specificity	Thymidine Kinase Polyclonal Antibody detects endogenous levels of Thymidine Kinase protein.
Formulation	Liquid in PBS containing 50% glycerol, 0.5% BSA and 0.02% sodium azide..
Storage	Store at -20°C. Avoid repeated freeze-thaw cycles.
Protein Name	Thymidine kinase cytosolic
Gene Name	TK1
Cellular localization	Cytoplasm.
Purification	The antibody was affinity-purified from rabbit antiserum by affinity-chromatography using epitope-specific immunogen.
Clonality	Polyclonal

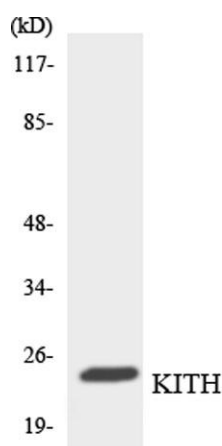
Concentration	1 mg/ml
Observed band	25kD
Human Gene ID	7083
Human Swiss-Prot Number	P04183
Alternative Names	TK1; Thymidine kinase; cytosolic

Background

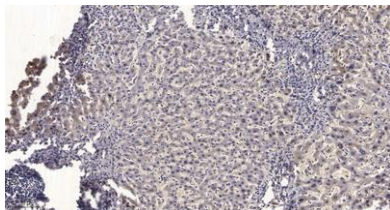
catalytic activity:ATP + thymidine = ADP + thymidine 5'-phosphate.,miscellaneous:Two forms have been identified in animal cells, one in cytosol and one in mitochondria. Activity of the cytosolic enzyme is high in proliferating cells and peaks during the S-phase of the cell cycle; it is very low in resting cells.,PTM:Phosphorylated on Ser-13 in mitosis.,similarity:Belongs to the thymidine kinase family.,



Western blot analysis of lysates from HeLa and COS7 cells, using KITH Antibody. The lane on the right is blocked with the synthesized peptide.



Western blot analysis of the lysates from RAW264.7 cells using KITH antibody.



Immunohistochemical analysis of paraffin-embedded human liver cancer. 1, Antibody was diluted at 1:200(4° overnight). 2, Tris-EDTA,pH9.0 was used for antigen retrieval. 3,Secondary antibody was diluted at 1:200(room temperature, 45min).