

TEF-5 rabbit pAb**Cat#: orb770238 (Manual)**

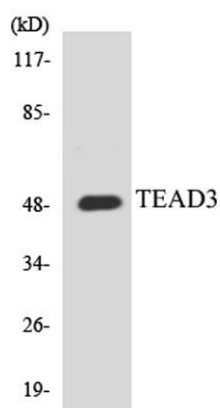
For research use only. Not intended for diagnostic use.

Product Name	TEF-5 rabbit pAb
Host species	Rabbit
Applications	WB;ELISA
Species Cross-Reactivity	Human;Mouse
Recommended dilutions	Western Blot: 1/500 - 1/2000. ELISA: 1/10000. Not yet tested in other applications.
Immunogen	The antiserum was produced against synthesized peptide derived from human TEAD3. AA range:211-260
Specificity	TEF-5 Polyclonal Antibody detects endogenous levels of TEF-5 protein.
Formulation	Liquid in PBS containing 50% glycerol, 0.5% BSA and 0.02% sodium azide..
Storage	Store at -20°C. Avoid repeated freeze-thaw cycles.
Protein Name	Transcriptional enhancer factor TEF-5
Gene Name	TEAD3
Cellular localization	Nucleus.
Purification	The antibody was affinity-purified from rabbit antiserum by affinity-chromatography using epitope-specific immunogen.
Clonality	Polyclonal

Concentration	1 mg/ml
Observed band	49kD
Human Gene ID	7005
Human Swiss-Prot Number	Q99594
Alternative Names	TEAD3; TEAD5; TEF5; Transcriptional enhancer factor TEF-5; DTEF-1; TEA domain family member 3; TEAD-3

Background

This gene product is a member of the transcriptional enhancer factor (TEF) family of transcription factors, which contain the TEA/ATTS DNA-binding domain. It is predominantly expressed in the placenta and is involved in the transactivation of the chorionic somatomammotropin-B gene enhancer. Translation of this protein is initiated at a non-AUG (AUA) start codon. [provided by RefSeq, Jul 2008],



Western blot analysis of the lysates from HUVEC cells using TEAD3 antibody.