

Bub1 rabbit pAb**Cat#: orb770232 (Manual)**

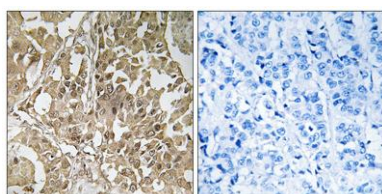
For research use only. Not intended for diagnostic use.

Product Name	Bub1 rabbit pAb
Host species	Rabbit
Applications	IHC;IF;ELISA
Species Cross-Reactivity	Human;Mouse
Recommended dilutions	Immunohistochemistry: 1/100 - 1/300. ELISA: 1/10000. Not yet tested in other applications.
Immunogen	The antiserum was produced against synthesized peptide derived from human BUB1. AA range:251-300
Specificity	Bub1 Polyclonal Antibody detects endogenous levels of Bub1 protein.
Formulation	Liquid in PBS containing 50% glycerol, 0.5% BSA and 0.02% sodium azide..
Storage	Store at -20°C. Avoid repeated freeze-thaw cycles.
Protein Name	Mitotic checkpoint serine/threonine-protein kinase BUB1
Gene Name	BUB1
Cellular localization	Nucleus. Chromosome, centromere, kinetochore. Nuclear in interphase cells. Accumulates gradually during G1 and S phase of the cell cycle, peaks at G2/M, and drops dramatically after mitosis. Localizes to the outer kinetochore. Kinetochore localization is required for normal mitotic timing and checkpoint response to spindle damage and occurs very early in prophase. AURKB, KNL1 and INCENP are required for kinetochore localization (By similarity). .

Purification	The antibody was affinity-purified from rabbit antiserum by affinity-chromatography using epitope-specific immunogen.
Clonality	Polyclonal
Concentration	1 mg/ml
Observed band	
Human Gene ID	699
Human Swiss-Prot Number	O43683
Alternative Names	BUB1; BUB1L; Mitotic checkpoint serine/threonine-protein kinase BUB1; hBUB1; BUB1A

Background

This gene encodes a serine/threonine-protein kinase that play a central role in mitosis. The encoded protein functions in part by phosphorylating members of the mitotic checkpoint complex and activating the spindle checkpoint. This protein also plays a role in inhibiting the activation of the anaphase promoting complex/cyclosome. This protein may also function in the DNA damage response. Mutations in this gene have been associated with aneuploidy and several forms of cancer. Alternate splicing results in multiple transcript variants. [provided by RefSeq, Jul 2013],



Immunohistochemistry analysis of paraffin-embedded human breast carcinoma tissue, using BUB1 Antibody. The picture on the right is blocked with the synthesized peptide.