

Cleaved-TACE (R215) rabbit pAb**Cat#: orb770205 (Manual)**

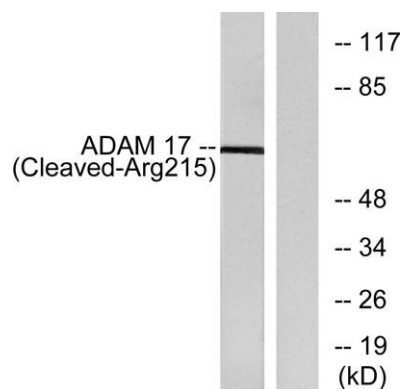
For research use only. Not intended for diagnostic use.

Product Name	Cleaved-TACE (R215) rabbit pAb
Host species	Rabbit
Applications	WB;ELISA
Species Cross-Reactivity	Human;Rat;Mouse;
Recommended dilutions	Western Blot: 1/500 - 1/2000. ELISA: 1/20000. Not yet tested in other applications.
Immunogen	The antiserum was produced against synthesized peptide derived from human ADAM 17. AA range:196-245
Specificity	Cleaved-TACE (R215) Polyclonal Antibody detects endogenous levels of fragment of activated TACE protein resulting from cleavage adjacent to R215.
Formulation	Liquid in PBS containing 50% glycerol, 0.5% BSA and 0.02% sodium azide..
Storage	Store at -20°C. Avoid repeated freeze-thaw cycles.
Protein Name	Disintegrin and metalloproteinase domain-containing protein 17
Gene Name	ADAM17
Cellular localization	Membrane; Single-pass type I membrane protein.
Purification	The antibody was affinity-purified from rabbit antiserum by affinity-chromatography using epitope-specific immunogen.
Clonality	Polyclonal

Concentration	1 mg/ml
Observed band	65kD
Human Gene ID	6868
Human Swiss-Prot Number	P78536
Alternative Names	ADAM17; CSVP; TACE; Disintegrin and metalloproteinase domain-containing protein 17; ADAM 17; Snake venom-like protease; TNF-alpha convertase; TNF-alpha-converting enzyme; CD antigen CD156b

Background

ADAM metalloproteinase domain 17(ADAM17) Homo sapiens This gene encodes a member of the ADAM (a disintegrin and metalloprotease domain) family. Members of this family are membrane-anchored proteins structurally related to snake venom disintegrins, and have been implicated in a variety of biologic processes involving cell-cell and cell-matrix interactions, including fertilization, muscle development, and neurogenesis. The encoded preproprotein is proteolytically processed to generate the mature protease. The encoded protease functions in the ectodomain shedding of tumor necrosis factor-alpha, in which soluble tumor necrosis factor-alpha is released from the membrane-bound precursor. This protease also functions in the processing of numerous other substrates, including cell adhesion proteins, cytokine and growth factor receptors and epidermal growth factor (EGF) receptor ligands. The encoded protein also plays a prominent role in the activation of



Western blot analysis of lysates from rat liver cells, using ADAM 17 (Cleaved-Arg215) Antibody. The lane on the right is blocked with the synthesized peptide.