

## TACC1 rabbit pAb

**Cat#: orb770204 (Manual)**

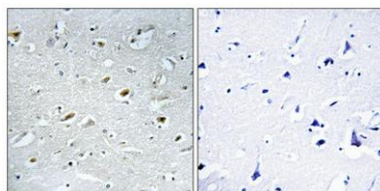
For research use only. Not intended for diagnostic use.

<b>Product Name</b>	TACC1 rabbit pAb
<b>Host species</b>	Rabbit
<b>Applications</b>	WB;IHC;IF;ELISA
<b>Species Cross-Reactivity</b>	Human;Mouse
<b>Recommended dilutions</b>	Western Blot: 1/500 - 1/2000. Immunohistochemistry: 1/100 - 1/300. Immunofluorescence: 1/200 - 1/1000. ELISA: 1/10000. Not yet tested in other applications.
<b>Immunogen</b>	The antiserum was produced against synthesized peptide derived from human TACC1. AA range:11-60
<b>Specificity</b>	TACC1 Polyclonal Antibody detects endogenous levels of TACC1 protein.
<b>Formulation</b>	Liquid in PBS containing 50% glycerol, 0.5% BSA and 0.02% sodium azide..
<b>Storage</b>	Store at -20°C. Avoid repeated freeze-thaw cycles.
<b>Protein Name</b>	Transforming acidic coiled-coil-containing protein 1
<b>Gene Name</b>	TACC1
<b>Cellular localization</b>	Cytoplasm . Nucleus . Cytoplasm, cytoskeleton, microtubule organizing center, centrosome . Midbody . Nucleus during interphase. Weakly concentrated at centrosomes during mitosis and colocalizes with AURKC at the midbody during cytokinesis. .; [Isoform 5]: Membrane ; Lipid-anchor .; [Isoform 10]: Cytoplasm .
<b>Purification</b>	The antibody was affinity-purified from rabbit antiserum by affinity-chromatography using       epitope-specific immunogen.

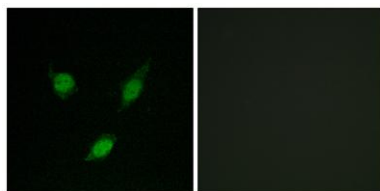
<b>Clonality</b>	Polyclonal
<b>Concentration</b>	1 mg/ml
<b>Observed band</b>	87kD
<b>Human Gene ID</b>	6867
<b>Human Swiss-Prot Number</b>	O75410
<b>Alternative Names</b>	TACC1; KIAA1103; Transforming acidic coiled-coil-containing protein 1; Gastric cancer antigen Ga55; Taxin-1

### Background

This locus may represent a breast cancer candidate gene. It is located close to FGFR1 on a region of chromosome 8 that is amplified in some breast cancers. Three transcript variants encoding different isoforms have been found for this gene. [provided by RefSeq, Apr 2009],



**Immunohistochemical analysis of paraffin-embedded Human brain. Antibody was diluted at 1:100(4° overnight). High-pressure and temperature Tris-EDTA,pH8.0 was used for antigen retrieval. Negative contrl (right) obtained from antibody was pre-absorbed by immunogen peptide.**



**Immunofluorescence analysis of MCF7 cells, using TACC1 Antibody. The picture on the right is blocked with the synthesized peptide.**

