

BRS-3 rabbit pAb**Cat#: orb770188 (Manual)**

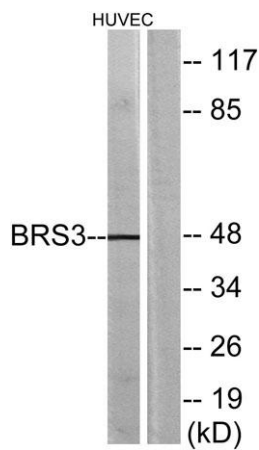
For research use only. Not intended for diagnostic use.

Product Name	BRS-3 rabbit pAb
Host species	Rabbit
Applications	WB;IHC;IF;ELISA
Species Cross-Reactivity	Human;Rat;Mouse;
Recommended dilutions	Western Blot: 1/500 - 1/2000. Immunohistochemistry: 1/100 - 1/300. Immunofluorescence: 1/200 - 1/1000. ELISA: 1/10000. Not yet tested in other applications.
Immunogen	The antiserum was produced against synthesized peptide derived from human BRS3. AA range:161-210
Specificity	BRS-3 Polyclonal Antibody detects endogenous levels of BRS-3 protein.
Formulation	Liquid in PBS containing 50% glycerol, 0.5% BSA and 0.02% sodium azide..
Storage	Store at -20°C. Avoid repeated freeze-thaw cycles.
Protein Name	Bombesin receptor subtype-3
Gene Name	BRS3
Cellular localization	Cell membrane; Multi-pass membrane protein.
Purification	The antibody was affinity-purified from rabbit antiserum by affinity-chromatography using epitope-specific immunogen.
Clonality	Polyclonal

Concentration	1 mg/ml
Observed band	47kD
Human Gene ID	680
Human Swiss-Prot Number	P32247
Alternative Names	BRS3; Bombesin receptor subtype-3; BRS-3

Background

The protein encoded by this gene is a G protein-coupled membrane receptor that binds bombesin-like peptides. This binding results in activation of a phosphatidylinositol-calcium second messenger system, with physiological effects including regulation of metabolic rate, glucose metabolism, and hypertension. [provided by RefSeq, Sep 2011],



Western blot analysis of lysates from HUVEC cells, using BRS3 Antibody. The lane on the right is blocked with the synthesized peptide.