

SNAP 25 rabbit pAb**Cat#: orb770121 (Manual)**

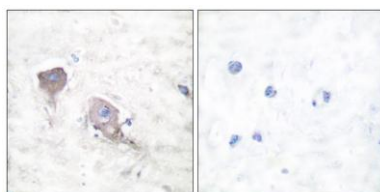
For research use only. Not intended for diagnostic use.

Product Name	SNAP 25 rabbit pAb
Host species	Rabbit
Applications	WB;IHC;IF;ELISA
Species Cross-Reactivity	Human;Mouse;Rat
Recommended dilutions	Western Blot: 1/500 - 1/2000. Immunohistochemistry: 1/100 - 1/300. ELISA: 1/20000. Not yet tested in other applications.
Immunogen	The antiserum was produced against synthesized peptide derived from human SNAP25. AA range:151-200
Specificity	SNAP 25 Polyclonal Antibody detects endogenous levels of SNAP 25 protein.
Formulation	Liquid in PBS containing 50% glycerol, 0.5% BSA and 0.02% sodium azide..
Storage	Store at -20°C. Avoid repeated freeze-thaw cycles.
Protein Name	Synaptosomal-associated protein 25
Gene Name	SNAP-25
Cellular localization	Cytoplasm, perinuclear region . Cell membrane ; Lipid-anchor . Cell junction, synapse, synaptosome . Photoreceptor inner segment . Membrane association requires palmitoylation. Expressed throughout cytoplasm, concentrating at the perinuclear region. Colocal
Purification	The antibody was affinity-purified from rabbit antiserum by affinity-chromatography using epitope-specific immunogen.

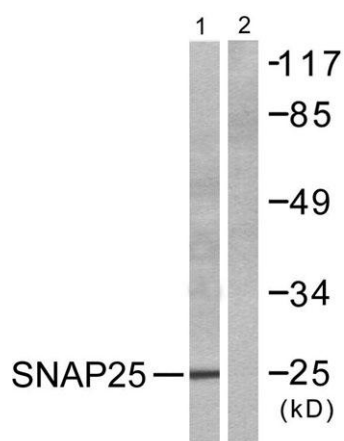
Clonality	Polyclonal
Concentration	1 mg/ml
Observed band	25kD
Human Gene ID	6616
Human Swiss-Prot Number	P60880
Alternative Names	SNAP25; SNAP; Synaptosomal-associated protein 25; SNAP-25; Super protein; SUP; Synaptosomal-associated 25 kDa protein

Background

Synaptic vesicle membrane docking and fusion is mediated by SNAREs (soluble N-ethylmaleimide-sensitive factor attachment protein receptors) located on the vesicle membrane (v-SNAREs) and the target membrane (t-SNAREs). The assembled v-SNARE/t-SNARE complex consists of a bundle of four helices, one of which is supplied by v-SNARE and the other three by t-SNARE. For t-SNAREs on the plasma membrane, the protein syntaxin supplies one helix and the protein encoded by this gene contributes the other two. Therefore, this gene product is a presynaptic plasma membrane protein involved in the regulation of neurotransmitter release. Two alternative transcript variants encoding different protein isoforms have been described for this gene. [provided by RefSeq, Jul 2008],



Immunohistochemistry analysis of paraffin-embedded human brain tissue, using SNAP25 Antibody. The picture on the right is blocked with the synthesized peptide.



Western blot analysis of lysates from Raw264.7 cells, treated with EGF 200ng/ml 30', using SNAP25 Antibody. The lane on the right is blocked with the synthesized peptide.