

**PEPT1 rabbit pAb****Cat#: orb770108 (Manual)**

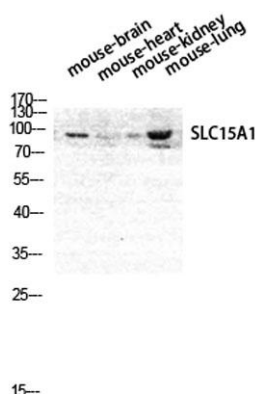
For research use only. Not intended for diagnostic use.

<b>Product Name</b>	PEPT1 rabbit pAb
<b>Host species</b>	Rabbit
<b>Applications</b>	WB;ELISA;IHC
<b>Species Cross-Reactivity</b>	Human;Mouse;Rat
<b>Recommended dilutions</b>	WB 1:500-2000;IHC-p 1:50-300; ELISA 2000-20000
<b>Immunogen</b>	The antiserum was produced against synthesized peptide derived from human SLC15A1. AA range:225-274
<b>Specificity</b>	PEPT1 Polyclonal Antibody detects endogenous levels of PEPT1 protein.
<b>Formulation</b>	Liquid in PBS containing 50% glycerol, 0.5% BSA and 0.02% sodium azide..
<b>Storage</b>	Store at -20°C. Avoid repeated freeze-thaw cycles.
<b>Protein Name</b>	Solute carrier family 15 member 1
<b>Gene Name</b>	SLC15A1
<b>Cellular localization</b>	Membrane ; Multi-pass membrane protein .
<b>Purification</b>	The antibody was affinity-purified from rabbit antiserum by affinity-chromatography using epitope-specific immunogen.
<b>Clonality</b>	Polyclonal

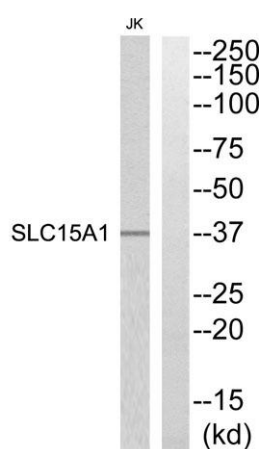
<b>Concentration</b>	1 mg/ml
<b>Observed band</b>	37kD
<b>Human Gene ID</b>	6564
<b>Human Swiss-Prot Number</b>	P46059
<b>Alternative Names</b>	SLC15A1; PEPT1; Solute carrier family 15 member 1; Intestinal H(+)/peptide cotransporter; Oligopeptide transporter; small intestine isoform; Peptide transporter 1

### Background

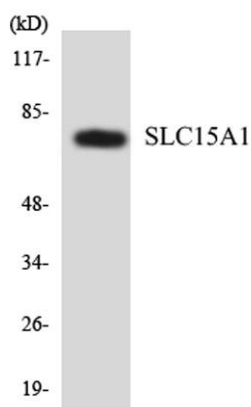
This gene encodes an intestinal hydrogen peptide cotransporter that is a member of the solute carrier family 15. The encoded protein is localized to the brush border membrane of the intestinal epithelium and mediates the uptake of di- and tripeptides from the lumen into the enterocytes. This protein plays an important role in the uptake and digestion of dietary proteins. This protein also facilitates the absorption of numerous peptidomimetic drugs. [provided by RefSeq, Apr 2010],



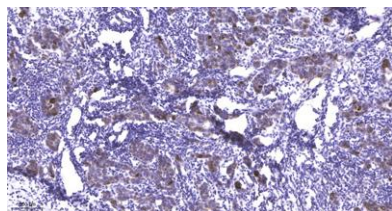
**Western Blot analysis of MOUSE-BRAIN MOUSE-HEART MOUSE-LUNG MOUSE-KIDNEY cells using PEPT1 Polyclonal Antibody diluted at 1:1000**



**Western blot analysis of SLC15A1 Antibody. The lane on the right is blocked with the SLC15A1 peptide.**



Western blot analysis of the lysates from HeLa cells using SLC15A1 antibody.



Immunohistochemical analysis of paraffin-embedded human Breast cancer. 1, Antibody was diluted at 1:200(4° overnight). 2, Tris-EDTA,pH9.0 was used for antigen retrieval. 3,Secondary antibody was diluted at 1:200(room temperature, 45min).