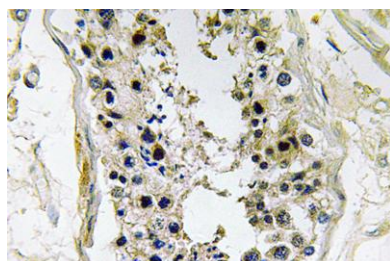


BMP-8 rabbit pAb**Cat#: orb770107 (Manual)**

For research use only. Not intended for diagnostic use.

Product Name	BMP-8 rabbit pAb
Host species	Rabbit
Applications	IHC;IF;ELISA
Species Cross-Reactivity	Human;Rat;Mouse;
Recommended dilutions	Immunohistochemistry: 1/100 - 1/300. ELISA: 1/40000. Not yet tested in other applications.
Immunogen	The antiserum was produced against synthesized peptide derived from human BMP-8. AA range:41-90
Specificity	BMP-8 Polyclonal Antibody detects endogenous levels of BMP-8 protein.
Formulation	Liquid in PBS containing 50% glycerol, 0.5% BSA and 0.02% sodium azide..
Storage	Store at -20°C. Avoid repeated freeze-thaw cycles.
Protein Name	Bone morphogenetic protein 8A/B
Gene Name	BMP8A/BMP8B
Cellular localization	Secreted .
Purification	The antibody was affinity-purified from rabbit antiserum by affinity-chromatography using epitope-specific immunogen.
Clonality	Polyclonal

Concentration	1 mg/ml
Observed band	
Human Gene ID	656
Human Swiss-Prot Number	P34820/Q7Z5Y6
Alternative Names	BMP8B; BMP8; Bone morphogenetic protein 8B; BMP-8; BMP-8B; Osteogenic protein 2; OP-2; BMP8A; Bone morphogenetic protein 8A; BMP-8A
Background	This gene encodes a secreted ligand of the TGF-beta (transforming growth factor-beta) superfamily of proteins. Ligands of this family bind various TGF-beta receptors leading to recruitment and activation of SMAD family transcription factors that regulate gene expression. The encoded preproprotein is proteolytically processed to generate each subunit of the disulfide-linked homodimer. The encoded protein stimulates thermogenesis in brown adipose tissue. Expression of this gene may be downregulated in pancreatic cancer. This gene may have arose from a gene duplication event and its gene duplicate is also present on chromosome 1. [provided by RefSeq, Jul 2016],



Immunohistochemistry analysis of BMP-8 antibody in paraffin-embedded human testis tissue.