

TAUT rabbit pAb

Cat#: orb770094 (Manual)

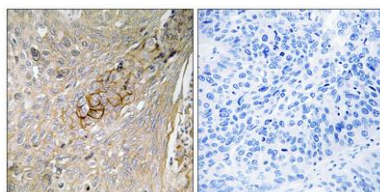
For research use only. Not intended for diagnostic use.

Product Name	TAUT rabbit pAb
Host species	Rabbit
Applications	WB;IHC;IF;ELISA
Species Cross-Reactivity	Human;Mouse;Rat
Recommended dilutions	Western Blot: 1/500 - 1/2000. Immunohistochemistry: 1/100 - 1/300. ELISA: 1/40000. Not yet tested in other applications.
Immunogen	The antiserum was produced against synthesized peptide derived from human SLC6A6. AA range:561-610
Specificity	TAUT Polyclonal Antibody detects endogenous levels of TAUT protein.
Formulation	Liquid in PBS containing 50% glycerol, 0.5% BSA and 0.02% sodium azide..
Storage	Store at -20°C. Avoid repeated freeze-thaw cycles.
Protein Name	Sodium- and chloride-dependent taurine transporter
Gene Name	SLC6A6
Cellular localization	Cell membrane ; Multi-pass membrane protein .
Purification	The antibody was affinity-purified from rabbit antiserum by affinity-chromatography using epitope-specific immunogen.
Clonality	Polyclonal

Concentration	1 mg/ml
Observed band	70kD
Human Gene ID	6533
Human Swiss-Prot Number	P31641
Alternative Names	SLC6A6; Sodium- and chloride-dependent taurine transporter; Solute carrier family 6 member 6

Background

This gene encodes a multi-pass membrane protein that is a member of a family of sodium and chloride-ion dependent transporters. The encoded protein transports taurine and beta-alanine. There is a pseudogene for this gene on chromosome 21. Alternative splicing results in multiple transcript variants. [provided by RefSeq, May 2013],



Immunohistochemistry analysis of paraffin-embedded human lung carcinoma tissue, using SLC6A6 Antibody. The picture on the right is blocked with the synthesized peptide.