

**NBEAL1 rabbit pAb****Cat#: orb770089 (Manual)**

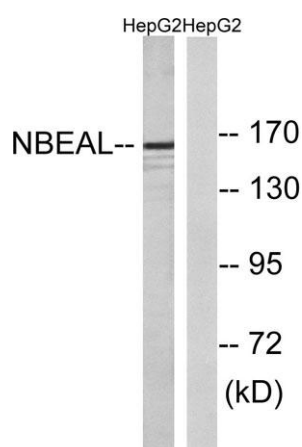
For research use only. Not intended for diagnostic use.

<b>Product Name</b>	NBEAL1 rabbit pAb
<b>Host species</b>	Rabbit
<b>Applications</b>	WB;IHC;IF;ELISA
<b>Species Cross-Reactivity</b>	Human;Rat;Mouse;
<b>Recommended dilutions</b>	Western Blot: 1/500 - 1/2000. Immunohistochemistry: 1/100 - 1/300. ELISA: 1/10000. Not yet tested in other applications.
<b>Immunogen</b>	The antiserum was produced against synthesized peptide derived from human NBEAL1. AA range:566-615
<b>Specificity</b>	NBEAL1 Polyclonal Antibody detects endogenous levels of NBEAL1 protein.
<b>Formulation</b>	Liquid in PBS containing 50% glycerol, 0.5% BSA and 0.02% sodium azide..
<b>Storage</b>	Store at -20°C. Avoid repeated freeze-thaw cycles.
<b>Protein Name</b>	Neurobeachin-like protein 1
<b>Gene Name</b>	NBEAL1
<b>Cellular localization</b>	endomembrane system,extrinsic component of membrane,
<b>Purification</b>	The antibody was affinity-purified from rabbit antiserum by affinity-chromatography using epitope-specific immunogen.
<b>Clonality</b>	Polyclonal

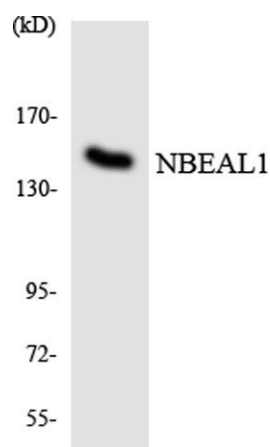
<b>Concentration</b>	1 mg/ml
<b>Observed band</b>	160kD
<b>Human Gene ID</b>	65065
<b>Human Swiss-Prot Number</b>	Q6ZS30
<b>Alternative Names</b>	NBEAL1; ALS2CR16; ALS2CR17; Neurobeachin-like protein 1; Amyotrophic lateral sclerosis 2 chromosomal region candidate gene 16 protein; Amyotrophic lateral sclerosis 2 chromosomal region candidate gene 17 protein

#### Background

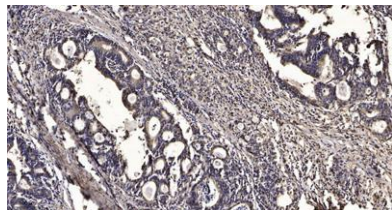
sequence caution:Translated as stop.,similarity:Belongs to the WD repeat neurobeachin family.,similarity:Contains 1 BEACH domain.,similarity:Contains 2 WD repeats.,tissue specificity:Highly expressed in brain, kidney, prostate and testis. Weakly expressed in ovary, small intestine, colon and peripheral blood leukocytes. May be correlative to several tumors, such as ovary serous adenocarcinoma and metastasis mammary gland carcinoma breast.,



Western blot analysis of lysates from HepG2 cells, using NBEAL1 Antibody. The lane on the right is blocked with the synthesized peptide.



Western blot analysis of the lysates from HeLa cells using NBEAL1 antibody.



**Immunohistochemical analysis of paraffin-embedded human Gastric adenocarcinoma. 1, Antibody was diluted at 1:200(4° overnight). 2, Tris-EDTA,pH9.0 was used for antigen retrieval. 3,Secondary antibody was diluted at 1:200(room temperature, 45min).**