

Six1 rabbit pAb

Cat#: orb770081 (Manual)

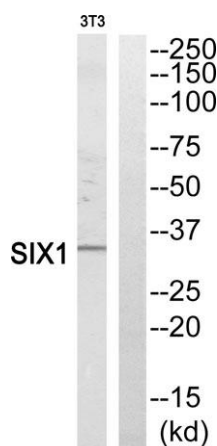
For research use only. Not intended for diagnostic use.

Product Name	Six1 rabbit pAb
Host species	Rabbit
Applications	WB;ELISA;IHC
Species Cross-Reactivity	Human;Mouse
Recommended dilutions	WB 1:500-2000;IHC-p 1:50-300; ELISA 2000-20000
Immunogen	The antiserum was produced against synthesized peptide derived from human SIX1. AA range:111-160
Specificity	Six1 Polyclonal Antibody detects endogenous levels of Six1 protein.
Formulation	Liquid in PBS containing 50% glycerol, 0.5% BSA and 0.02% sodium azide..
Storage	Store at -20°C. Avoid repeated freeze-thaw cycles.
Protein Name	Homeobox protein SIX1
Gene Name	SIX1
Cellular localization	Nucleus . Cytoplasm.
Purification	The antibody was affinity-purified from rabbit antiserum by affinity-chromatography using epitope-specific immunogen.
Clonality	Polyclonal

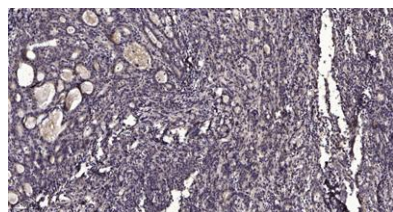
Concentration	1 mg/ml
Observed band	33kD
Human Gene ID	6495
Human Swiss-Prot Number	Q15475
Alternative Names	SIX1; Homeobox protein SIX1; Sine oculis homeobox homolog 1

Background

The protein encoded by this gene is a homeobox protein that is similar to the *Drosophila* 'sine oculis' gene product. This gene is found in a cluster of related genes on chromosome 14 and is thought to be involved in limb development. Defects in this gene are a cause of autosomal dominant deafness type 23 (DFNA23) and branchiootoc syndrome type 3 (BOS3). [provided by RefSeq, Jul 2008],



Western blot analysis of SIX1 Antibody. The lane on the right is blocked with the SIX1 peptide.



Immunohistochemical analysis of paraffin-embedded human Gastric adenocarcinoma. 1, Antibody was diluted at 1:200(4° overnight). 2, Tris-EDTA,pH9.0 was used for antigen retrieval. 3,Secondary antibody was diluted at 1:200(room temperature, 45min).