

Tensin3 rabbit pAb

Cat#: orb770071 (Manual)

For research use only. Not intended for diagnostic use.

Product Name	Tensin3 rabbit pAb
Host species	Rabbit
Applications	IHC;IF;ELISA
Species Cross-Reactivity	Human;Rat;Mouse;
Recommended dilutions	Immunohistochemistry: 1/100 - 1/300. Immunofluorescence: 1/200 - 1/1000. ELISA: 1/20000. Not yet tested in other applications.
Immunogen	The antiserum was produced against synthesized peptide derived from human TENS3. AA range:541-590
Specificity	Tensin3 Polyclonal Antibody detects endogenous levels of Tensin3 protein.
Formulation	Liquid in PBS containing 50% glycerol, 0.5% BSA and 0.02% sodium azide..
Storage	Store at -20°C. Avoid repeated freeze-thaw cycles.
Protein Name	Tensin-3
Gene Name	TNS3
Cellular localization	Cell junction, focal adhesion .
Purification	The antibody was affinity-purified from rabbit antiserum by affinity-chromatography using epitope-specific immunogen.
Clonality	Polyclonal

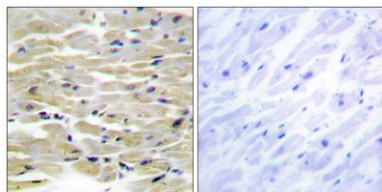
Concentration	1 mg/ml
Observed band	
Human Gene ID	64759
Human Swiss-Prot Number	Q68CZ2
Alternative Names	TNS3; TEM6; TENS1; TPP; Tensin-3; Tensin-like SH2 domain-containing protein 1; Tumor endothelial marker 6

Background

function: May play a role in actin remodeling. Involved in the dissociation of the integrin-tensin-actin complex. EGF activates TNS4 and down-regulates TNS3 which results in capping the tail of ITGB1. Seems to be involved in mammary cell migration. May be involved in cell migration and bone development.,**induction:** EGF induces down-regulation.,**PTM:** Epidermal growth factor(EGF) induces tyrosine phosphorylation in a time- and dose-dependent manner.,**similarity:** Contains 1 C2 tensin-type domain.,**similarity:** Contains 1 phosphatase tensin-type domain.,**similarity:** Contains 1 SH2 domain.,**subunit:** EGF promotes the interaction with EGFR. Interacts with PTK2 and BCAR1. Tyrosine phosphorylation is critical for these interactions.,**tissue specificity:** Expressed in umbilical vein endothelial cells, epithelial cells, and fibroblasts cells (at protein level). Highly expressed in thyroid, kidney and placenta. Low expression in heart, skeletal muscle, spleen, liver, and lung. Expressed in tumor endothelial cells. Expression seems to be down-regulated in thyroid tumor tissues and in anaplastic carcinomas.,



Immunofluorescence analysis of COS7 cells, using TENS3 Antibody. The picture on the right is blocked with the synthesized peptide.



Immunohistochemistry analysis of paraffin-embedded human heart tissue, using TENS3 Antibody. The picture on the right is blocked with the synthesized peptide.